

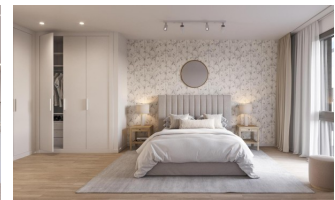


REF: # 11341

ALICANTE (ALICANTE CITY CENTRE)



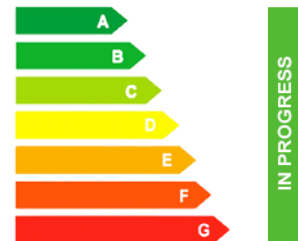
INFO	
PRIX:	443.600 €
TYPE:	
CITY:	Alicante (Alicante City Centre)
CHAMBRES:	3
Ba ENFANTS:	2
Built ( m2 ):	125
pas ( m2 ):	-
Terrasse ( m2 ):	10
A ENFANTS:	
de plante:	-
MESSAGE	-



## DESCRIPTION

**NEW BUILD PENTHOUSES IN ALICANTE CITY** New Build development of 53 apartments in Alicante city. Elegant design apartments with 2, 3 and 4 bedrooms with garage and storage room located 10 minutes walk from the city centre. Everything you need within your reach. This building has spectacular communal areas on the rooftop, unique in the city, with incredible panoramic view over the Mediterranean sea, you will enjoy a swimming pool, green areas, social space, gym and rooftop solarium with sunbathing areas. Located in the middle of the Costa Blanca, Alicante is one of the most important tourist destinations in the Spanish east coast. The many golf courses, along with the tranquil waters of the Mediterranean Sea, are part of the appeal of this beautiful harbour city, which sits at the foot of the Castle of Santa Barbara, a silent witness to the numerous civilisations to have settled here. The coastline is, without a doubt, the favourite recreational spot for the people of Alicante. The Explanada de España promenade, located across from the port, is a lively boulevard dotted with terraces and pavement cafes.

## CERTIFICAT ÉNERGÉTIQUE





## STYLE

- moderne
- contemporain

## VIEW

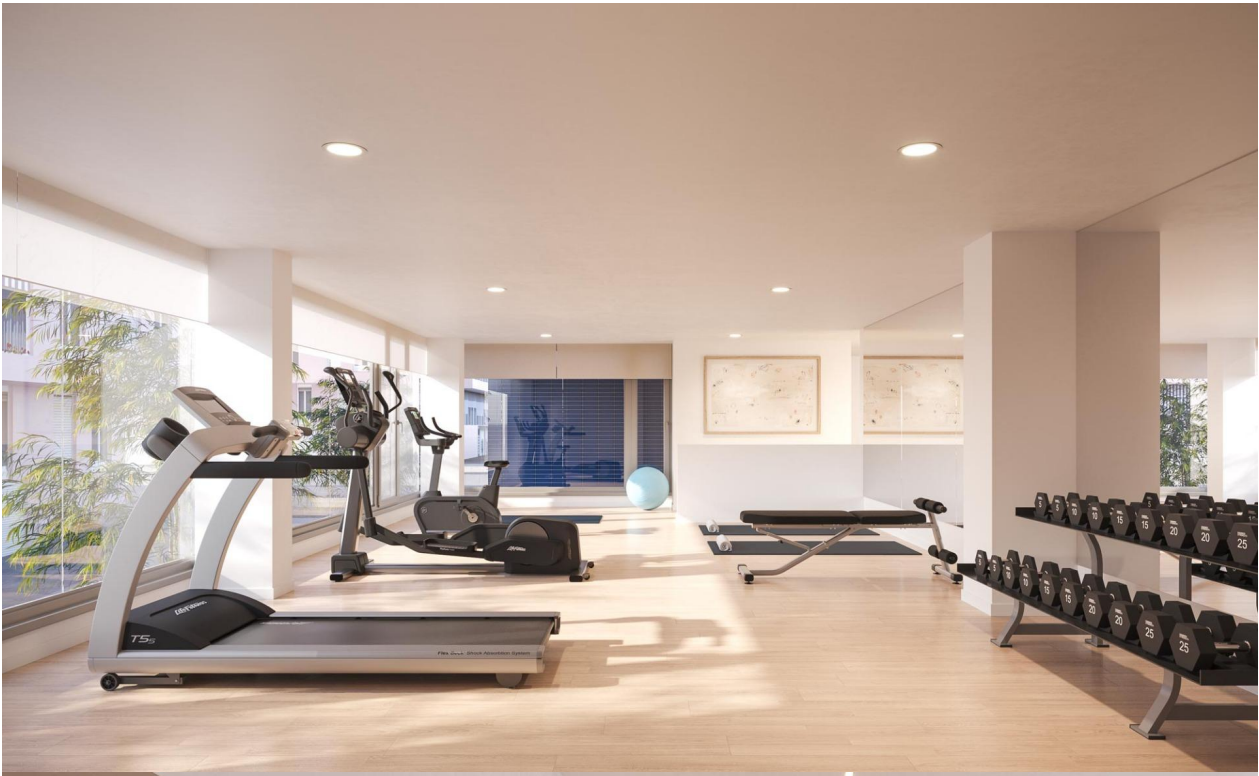
- Panoramico













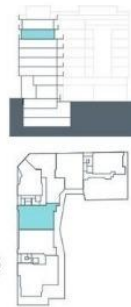


Esc. 2 P05-A



Superficies: Vivienda 3d

Superficie útil interior	85,28 m <sup>2</sup>
Superficie útil terrazas	22,04 m <sup>2</sup>
Superficie construida interior	98,22 m <sup>2</sup>
Superficie construida incluidas ZZCC	117,35 m <sup>2</sup>



El presente plano comercial, que incluye una parte gráfica y datos relativos a superficies, puede ser objeto de modificaciones ordenadas por los organismos públicos competentes y/o exigencias técnicas o jurídicas, siempre y cuando estén justificadas y no supongan alteraciones sustanciales. El mobiliario mobiliario no está incluido y el equipamiento del inmueble será el indicado en la correspondiente memoria de calidad.





**"OUR EXPERIENCE IS YOUR GUARANTEE"**