



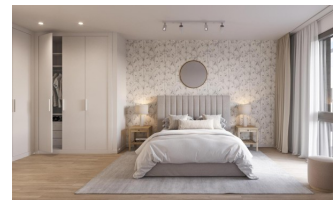
REF: # 11340

ALICANTE (ALICANTE CITY CENTRE)



INFO

PRIX:	416.600 €
TYPE:	Appartement
CITY:	Alicante (Alicante City Centre)
CHAMBRES:	3
Ba ENFANTS:	2
Built (m2):	115
pas (m2):	-
Terrasse (m2):	8
A ENFANTS:	
de plante:	-
MESSAGE	-



DESCRIPTION

NEW BUILD APARTMENTS IN ALICANTE CITY Elegant design apartments with 2, 3 and 4 bedrooms with garage and storage room located 10 minutes walk from the city centre. Everything you need within your reach. This building has spectacular communal areas on the rooftop, unique in the city, with incredible panoramic view over the Mediterranean sea, you will enjoy a swimming pool, green areas, social space , gym and rooftop solarium with sunbathing areas. Located in the middle of the Costa Blanca, Alicante is one most important tourist destinations in the Spanish east coast. The many golf courses, along with the tranquil waters of the Mediterranean Sea, are part of the appeal of this beautiful harbour city, which sits at the foot of the Castle of Santa Barbara, a silent witness to the numerous civilisations to have settled here. The coastline is, without a doubt, the favourite recreational spot for the people of Alicante. The Explanada de España promenade, located across from the port, is a lively boulevard dotted with terraces and pavement cafes.

CERTIFICAT ÉNERGÉTIQUE



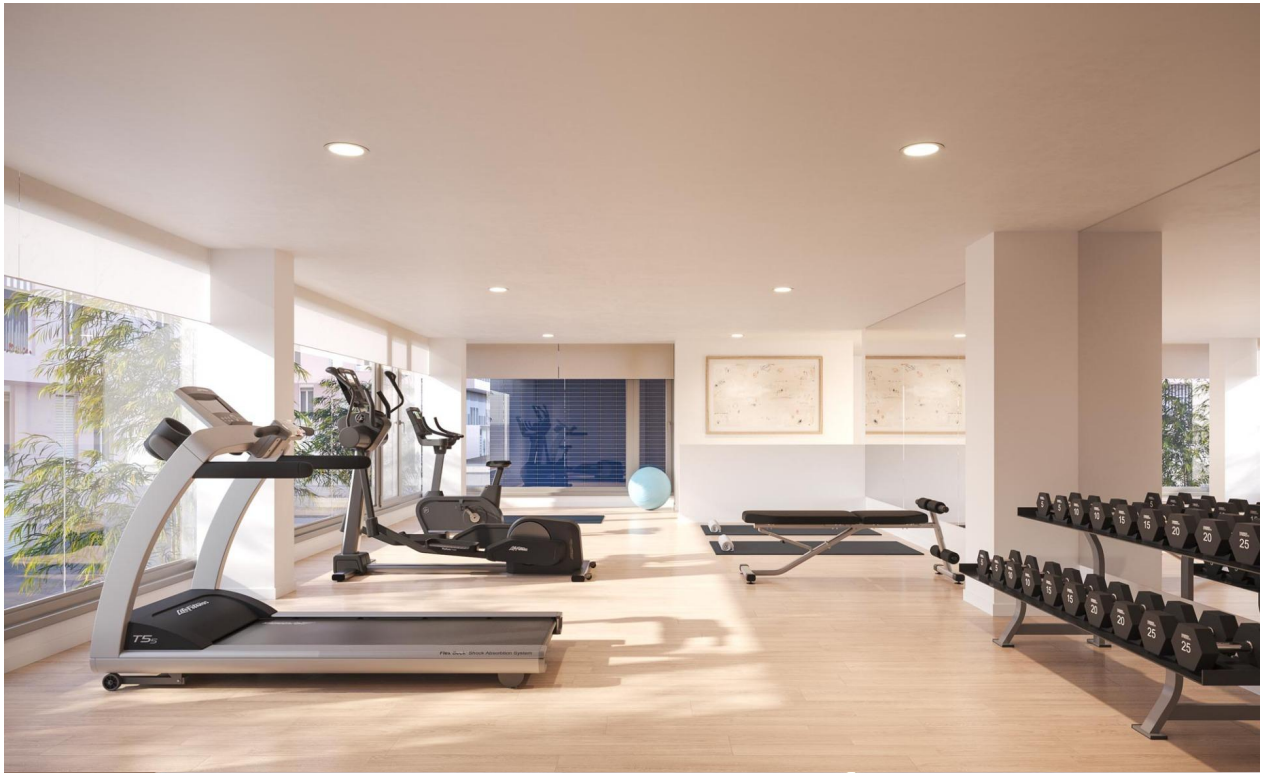
STYLE	VIEW	DISTANCE :	MEUBLÉ
<ul style="list-style-type: none">• moderne• contemporain	<ul style="list-style-type: none">• Panoramico	Beach : 1 Km aéroport: 10 Km	<ul style="list-style-type: none">• Vide
PARKING PAS. CAR	CUISINE	JARD RIVIÈRE ET TERRASSES N	EXTRA
: 1	<ul style="list-style-type: none">• cuisine	<ul style="list-style-type: none">• clôtures• Jard RIVER Communauté	<ul style="list-style-type: none">• intégré• Alarme• Porte de sécurité• Double vitrage• Elevator













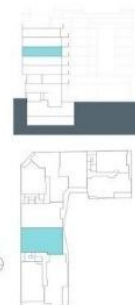
Esc. 1 P04-C



Superficies:

Vivienda 4d

Superficie útil interior	98,59 m²
Superficie útil terrazas	10,41 m²
Superficie construida interior	112,46 m²
Superficie construida incluidas ZZCC	134,57 m²



El presente plano comercial, que incluye una parte gráfica y datos relativos a superficies, puede ser objeto de modificaciones ordenadas por los organismos públicos competentes y/o exigencias técnicas o jurídicas, siempre y cuando estén justificadas y no supongan alteraciones sustanciales. El mobiliario mostrado no está incluido y el equipamiento del inmueble será el indicado en la correspondiente memoria de calidades.







"OUR EXPERIENCE IS YOUR GUARANTEE"