



REF: # 11055

COSTA MURCIA (CENTRO)



INFO

PRIX:	174.000 €
TYPE:	Appartement
CITY:	Costa Murcia (Centro)
CHAMBRES:	3
Ba ENFANTS:	2
Built (m2):	106
pas (m2):	-
Terrasse (m2):	-
A ENFANTS:	-
de plante:	-
MESSAGE	-



DESCRIPTION

FANTASTIC NEW BUILD APARTMENT IN TORRE-PACHECO, MURCIA - with communal pool. This 106m2 ground floor apartment consists of 3 bedrooms, 2 bathrooms, open kitchen / dining area, private solarium, storage room and underground parking. The complex is built over 3 floors and has a lovely communal pool, located only minutes away are supermarkets, pharmacies, banks, schools, bars, restaurants and the beach. Torre Pacheco is a large town set just off the AP7 heading south and is an inland setting. It is only 5 minutes from San Javier Airport (Murcia) and about 70 minutes from Alicante Airport. The train station connects the town to Cartagena and Murcia where you can spend the day exploring and enjoying the lovely roman architecture and the influence of the Moors who governed these cities many years ago. The trains go to Madrid daily from here. The golf courses of La Serena, Roda, Mar Menor and La Torre are nearby and are in top condition. The street market is held on Saturday mornings and is a large market selling everything from vegetables and fruit, to shoes and clothing to toys and

gizmos and gadgets. The AP-7 highway also gives you easy access to other regions nearby such as Pilar de la Horadada, San Pedro del Pinatar, Orihuela Costa, Torrevieja, Alicante, etc.



STYLE	VIEW	CLIMATISATION	DISTANCE :
<ul style="list-style-type: none">moderne	<ul style="list-style-type: none">Panoramico	<ul style="list-style-type: none">Central	Beach : 9 Km aéroport: 20 Km
MEUBLÉ	PARKING PAS. CAR	ÉTAGE	CUISINE
<ul style="list-style-type: none">Vide	Garage no. Car : 1	<ul style="list-style-type: none">tuilesStone	<ul style="list-style-type: none">cuisine
JARD RIVIÈRE ET TERRASSES N	EXTRA		
<ul style="list-style-type: none">Terrasse ouverte	<ul style="list-style-type: none">intégréPorte de sécuritéDouble vitragestockage		

PROPERTY GALLERY















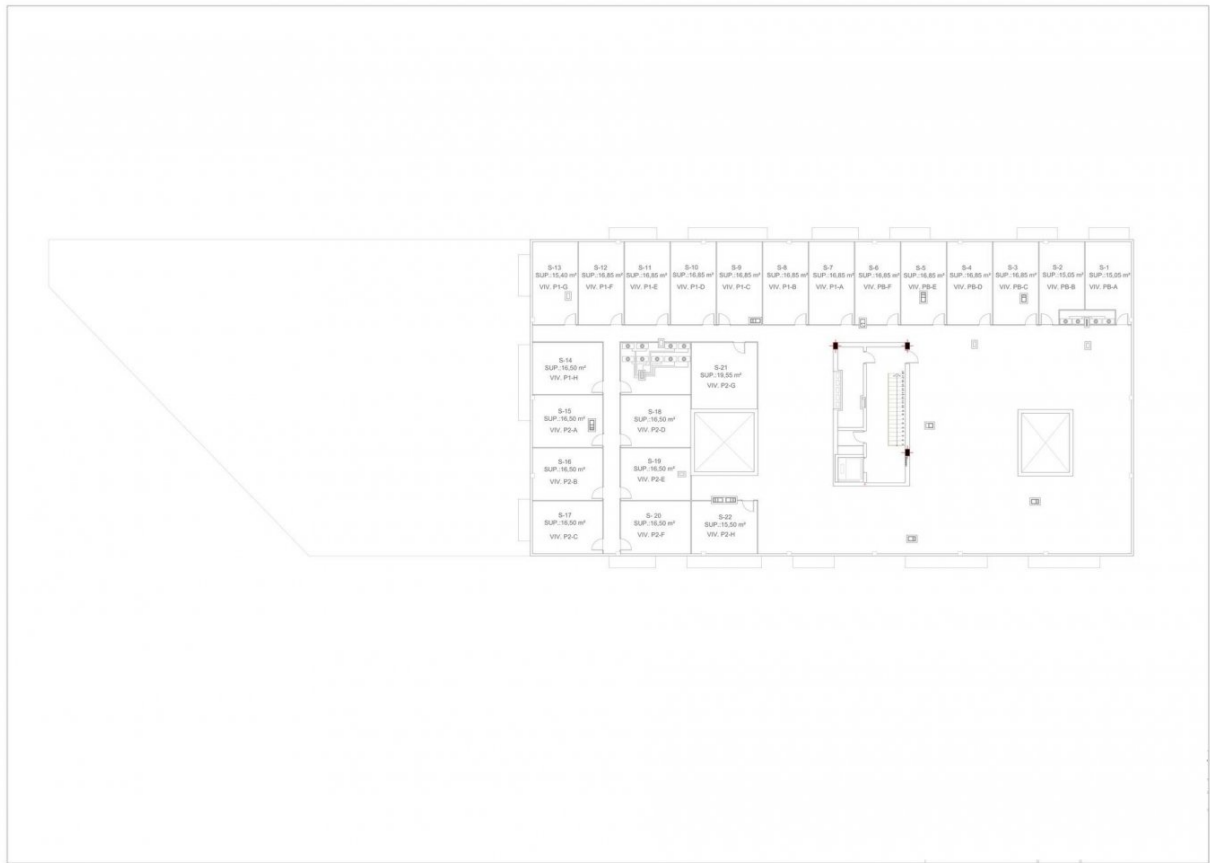
SUPERFICIES ÚTILES

SALÓN-COMEDOR	24,50 m ²
COCINA	8,60 m ²
LAVADERO	2,70 m ²
HABITACIÓN 1	13,40 m ²
HABITACIÓN 2	10,00 m ²
HABITACIÓN 3	10,00 m ²
BAÑO 1	5,13 m ²
BAÑO 2	4,60 m ²
PASILLO	9,95 m ²

Superficie construida: 101,30 m²

VIVIENDA PLANTA BAJA. MODELO 03









"OUR EXPERIENCE IS YOUR GUARANTEE"