



REF: # 11053

TORRE PACHECO (TORREPACHECO)



#### INFO

PRIX:	319.000 €
TYPE:	Villa
CITY:	Torre Pacheco (Torrepacheco)
CHAMBRES:	3
Ba ENFANTS:	2
Built ( m2 ):	118
pas ( m2 ):	68
Terrasse ( m2 ):	40
A ENFANTS:	-
de plante:	-
MESSAGE	-



#### DESCRIPTION

**NEW BUILD PROPERTIES IN TORRE-PACHECO** New Build complex of 2 corners semi-detached bungalow style villas and 2 townhouses located in Torre Pacheco, Costa Calida, Spain. Brand new designer properties with fabulous roof terraces with outdoor kitchen, BBQ, and toilet. Luxurious interiors and the finest fittings. Properties available with a choice of kitchen unit styles and tiles. Swimming pools are an optional extra and there is a large patio area and secure parking. Situated in a sought-after area of Torre Pacheco, a small traditional Spanish town 20 minutes inland from the Mar Menor. This ideal location gives you so much more for your money. Within walking distance to local amenities and many bars and restaurants. Torre Pacheco is surrounded by award winning golf courses and the whole region is regarded as one of the healthiest places to be in Spain. The sun shines on average 320 days a year. It is not for nothing that this coastal strip is called the "Costa Cálida" (warm coast). The humidity levels are very low. All of this leads to a perfect combination of sea, subtropical weather, lots of light and clean

air. Fantastic beaches of Costa Calida are 10 minutes away. Motorway network nearby to enable you to travel to other areas quickly and easily. The brand-new Murcia international airport is 20 minutes away.



**VIEW**

- Panoramico

**CLIMATISATION**

- Central

**PARKING PAS. CAR**

: 1

**JARD RIVIÈRE ET  
TERRASSES N**

- Terrasse ouverte
- clôtures
- barbecue / grill
- Jard RIVER n privée

**EXTRA**

- Porte de sécurité













VIVIENDA M1 01



PLANTA BAJA



PLANTA PRIMERA



M1 01

ESTANCIAS	M2 UTILES	M2 CONSTR.
PLANTA BAJA		
DORMITORIO 1	11,45	13,46
DORMITORIO 2	8,50	10,0
DORMITORIO 3	10,60	12,46
BAÑO 1	4,75	5,59
BAÑO 2	4,05	4,76
SALÓN-COMEDOR-COCINA	28,05	33,05
PASO	2,75	3,23
TOTAL SUP PLANTA BAJA M1 01		82,55 m <sup>2</sup>
PATIO	8,60	9,0
JARDIN EXTERIOR	46,98	51,76
PISCINA	8,20	8,20
PLANTA PRIMERA		
ASEO	2,75	3,74
BARBACOA	3,90	4,63
SOLARIUM CUBIERTO		27,80
TOTAL SUP PLANTA PRIMERA M1 01		36,17 m <sup>2</sup>
SOLARIUM		40,00
TOTAL SUP VIVIENDA M1 01		118,72 m <sup>2</sup>



VIVIENDA M1 04



PLANTA BAJA



PLANTA PRIMERA



M1 04

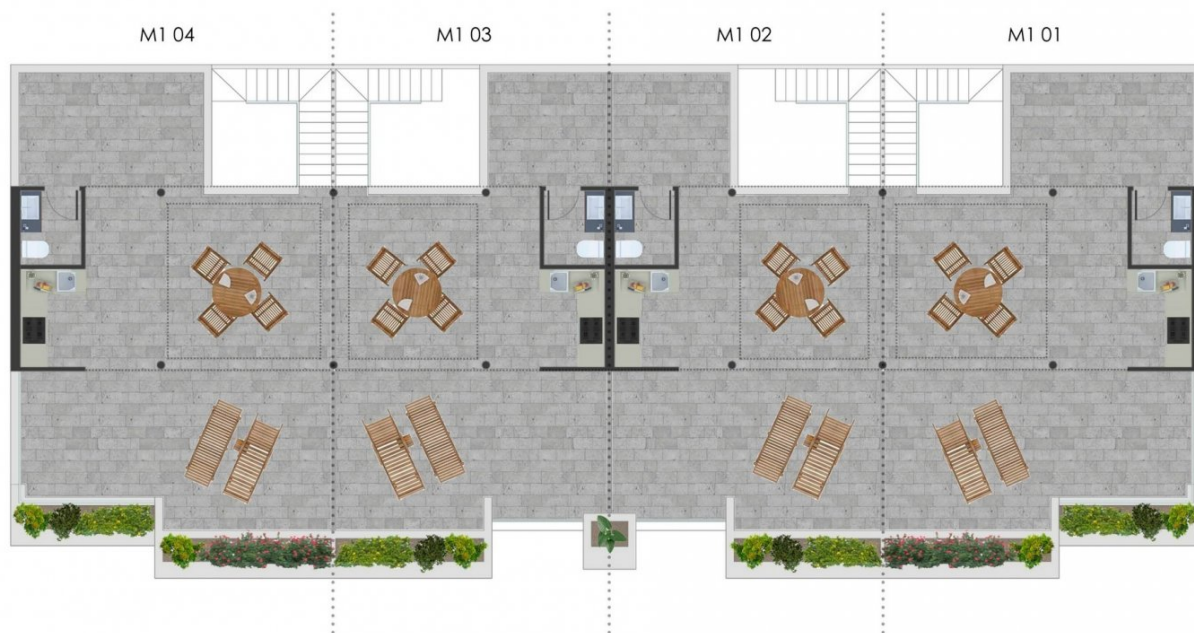
ESTANCIAS	M2 UTILES	M2 CONSTR.
PLANTA BAJA		
DORMITORIO 1	11,45	13,46
DORMITORIO 2	8,50	10,0
DORMITORIO 3	10,60	12,46
BAÑO 1	4,75	5,58
BAÑO 2	4,05	4,76
SALÓN-COMEDOR-COCINA	28,05	33,05
PASEO	2,75	3,23
PATIO		
TOTAL SUP PLANTA BAJA M1 01		
	70,15	82,55 m2
PLANTA PRIMERA		
ASEO	2,75	3,74
BARBACOA	3,90	4,63
SOLARIUM CUBIERTO		27,80
TOTAL SUP PLANTA PRIMERA M1 01		
	6,65	36,17 m2
SOLARIUM		
		40,00
TOTAL SUP VIVIENDA M1 01		
	76,80	118,72 m2



VIVIENDAS MÓDULO 1 PLANTA BAJA



VIVIENDAS MÓDULO 1 PLANTA PRIMERA



***"OUR EXPERIENCE IS YOUR GUARANTEE"***