



REF: # 11046

ALGORFA (LA FINCA GOLF)



INFO

PRIX: 679.000 €

TYPE: Villa

CITY: Algorfa (La Finca Golf)

CHAMBRES: 4

Ba ENFANTS: 3

Built (m2): 237

pas (m2): 334

Terrasse (m2): 59

A ENFANTS: -

de plante: -

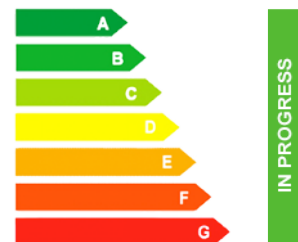
MESSAGE -



DESCRIPTION

MODERN DESIGN VILLA WITH GOLF VIEWS IN LA FINCA, ALGORFA - *SPECIAL OFFER 20.000€ FURNITURE GIFT VOUCHER* Designer villa in one of the most exclusive locations on the Costa Blanca. With spectacular views over the Finca Golf Resort, this modern house with Mediterranean touches of 4 bedrooms and 3 bathrooms, takes you to a privileged corner where you can enjoy the good climate in its more than 150 square metres and its basement of more than 80m2. It stands out for the use of the best qualities as well as a large garden that allows us to enjoy absolute privacy and a dreamlike private swimming pool that will make every moment an unforgettable memory. Main Specifications included, Interior and exterior furniture, Home Management System, Underfloor heating in bathrooms, White goods, private pool (8X4), Landscaped garden with irrigation system and Alarm system with cameras. Located on the La Finca golf course in Algorfa, 20 minutes from the wonderful beaches of Guardamar.

CERTIFICAT ÉNERGÉTIQUE



VIEW

- Panoramico

CLIMATISATION

- Central

PARKING PAS. CAR

: 1

JARD RIVIÈRE ET
TERRASSES N

- Terrasse ouverte
- arbres fruitiers
- clôtures







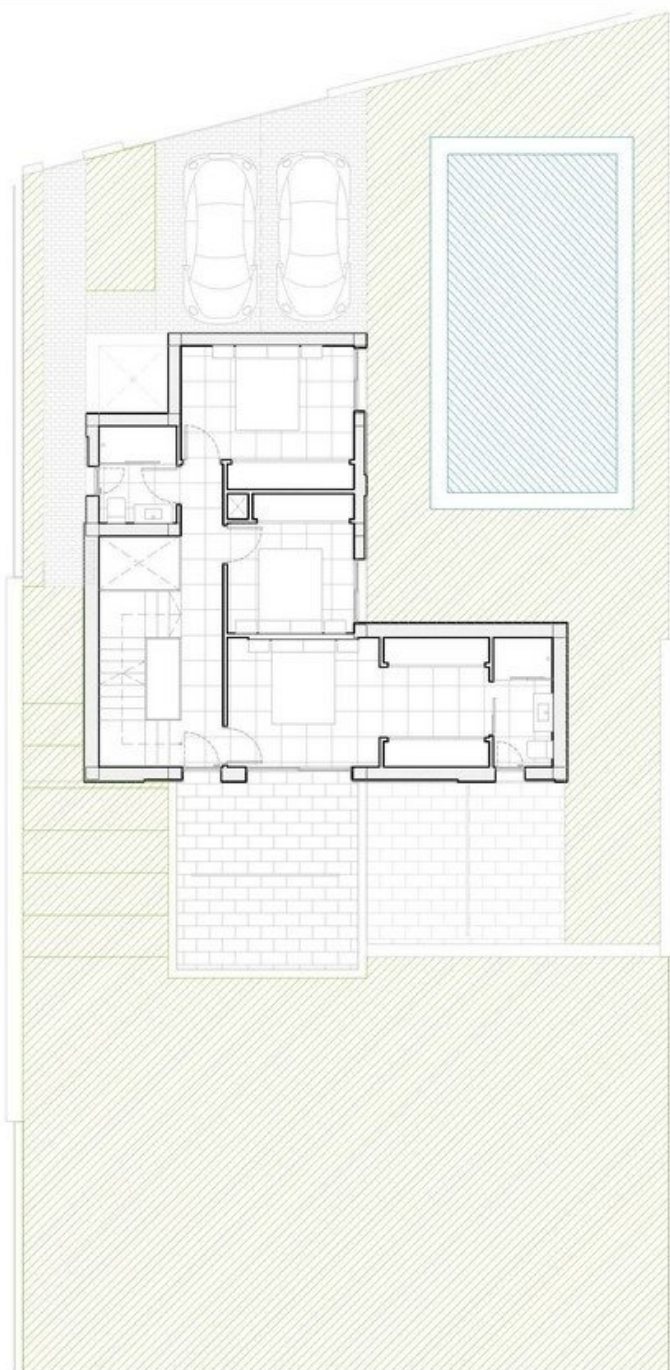












NÚMERO/NUMBER: 2117 a 2126

PLANTA PRIMERA/FIRST FLOOR
SUP. ÚTILES / USEFUL SURFACE

DORMITORIO 2/BEDROOM 2	19.00 M2
BÑO 2/BATH 2	4.30 M2
DORMITORIO 3/BEDROOM 3	9.50 M2
DORMITORIO 4/BEDROOM 4	13.20 M2
BÑO 3/BATH 3	4.20 M2
PASILLO/CORRIDOR	7.20 M2
ESCALERA/STAIRS	6.40 M2
TERRAZA/TERRACE	19.80 M2

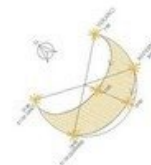
BUILT AREA: 155.70 M2
BASEMENT AREA: 82.90 M2

TERRACE AREA: 59.00 M2
POOL AREA: 32.00 M2

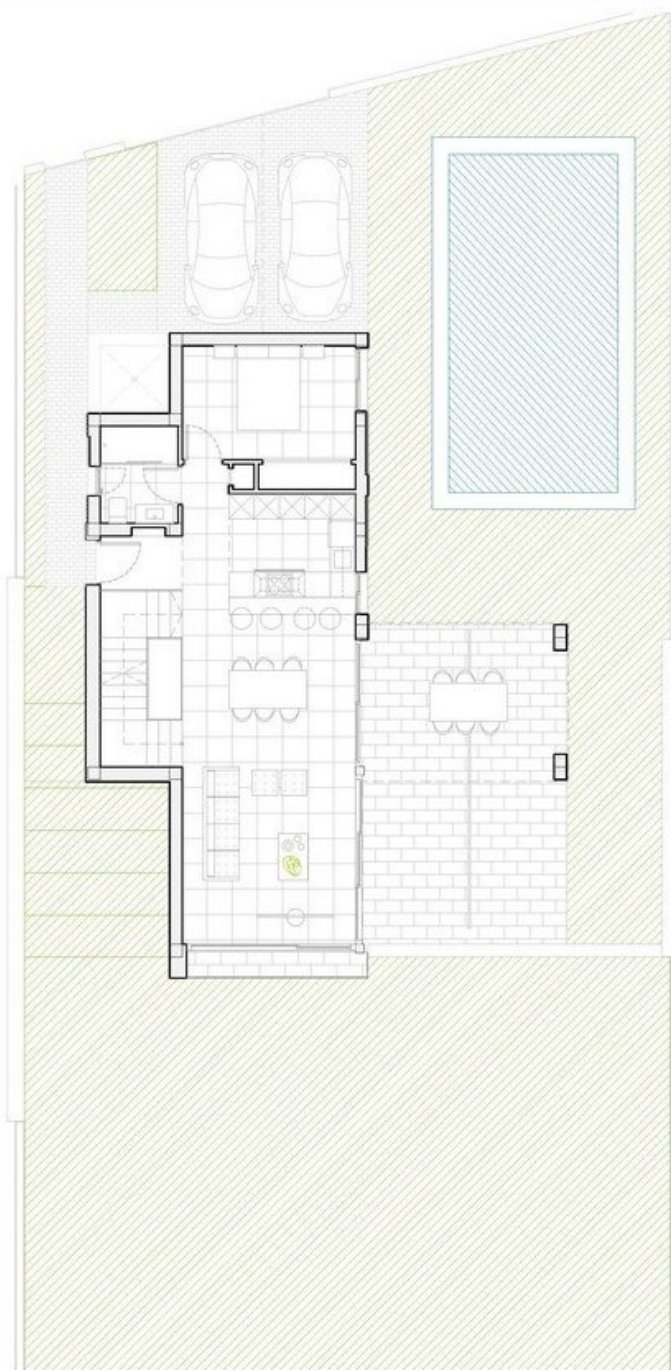
ENTRANCE: 10.00 M2
PARKING: 28.00 M2

BEDROOMS: 4
BATHROOMS: 3

SOLEAMIENTO/SUNCALC



ESCALA / SCALE 1:100 (A3)



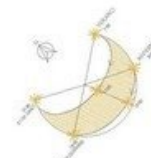
NÚMERO/NUMBER: 2117 a 2126

PLANTA BAJA/GROUND FLOOR
SUP. ÚTILES / USEFUL SURFACE

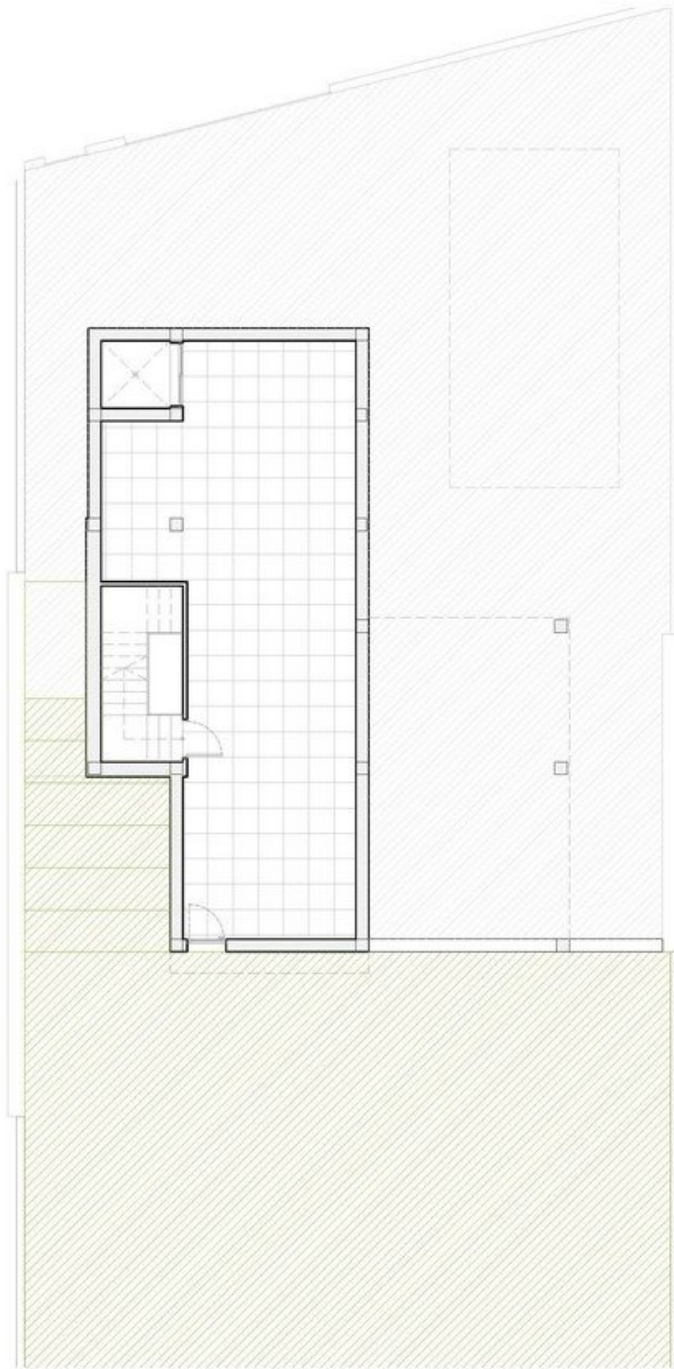
S/C/D/R/K	43,70 M2
DORMITORIO 1/BEDROOM 1	12,60 M2
BAÑO 1/BATH 1	4,20 M2
PASILLO/CORRIDOR	0,80 M2
ACCESO/HALL	2,50 M2
ESCALERA/STAIRS	6,40 M2
TERRAZA/TERRACE	39,20M2

BUILT AREA: 155,70 M2 TERRACE AREA: 59,00 M2 ENTRANCE: 10,00 M2 BEDROOMS: 4
BASEMENT AREA: 82,90 M2 POOL AREA: 32,00 M2 PARKING: 28,00 M2 BATHROOMS: 3

SOLEAMIENTO/SUNCALC



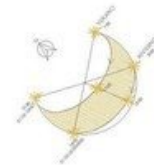
ESCALA / SCALE 1:100 (A3)



NÚMERO/NUMBER: 2117 a 2126

PLANTA SÓTANO/BASEMENT FLOOR
SUP. ÚTILES / USEFUL SURFACE

BUILT AREA: 155,70 M2 TERRACE AREA: 59,00 M2 ENTRANCE: 10,00 M2 BEDROOMS: 4
BASEMENT AREA: 82,90 M2 POOL AREA: 32,00 M2 PARKING: 28,00 M2 BATHROOMS: 3 SOLEAMIENTO / SUNCALC



ESCALA / SCALE 1:100 (A3)

"OUR EXPERIENCE IS YOUR GUARANTEE"