



REF: # 10984

TORREVIEJA (PUNTA PRIMA)



INFO

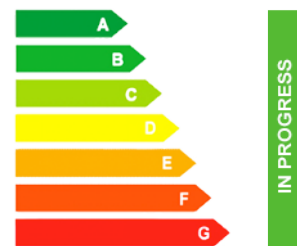
PRIX:	364.000 €
TYPE:	Appartement
CITY:	Torrevieja (Punta Prima)
CHAMBRES:	3
Ba ENFANTS:	2
Built (m2):	92
pas (m2):	-
Terrasse (m2):	19
A ENFANTS:	-
de plante:	-
MESSAGE	-



DESCRIPTION

NEW BUILD RESIDENTIAL COMPLEX IN PUNTA PRIMA New Build residential complex of 220 apartments in Punta Prima, Torrevieja. Apartments with 2 and 3 bedrooms and 2 bathrooms, open plan kitchen with living room, fitted wardrobes, all of them with large terraces. Ground floor apartments with garden and penthouses with solarium. All homes are delivered with an underground parking space. The residential has garden areas with swimming pools and paddle tennis court. Children can enjoy their own children's pool, as well as a children's play area. Punta Prima, located just 5 km from Torrevieja, is characterized by good communication and health infrastructures, the proximity to Alicante airport, and the number of services open throughout the year. Just 10 km away we can find the golf courses of Villamartín, Campoamor, Las Ramblas, Las Colinas and Lo Romero, as well as the commercial centres of La Zenia and Habaneras.

CERTIFICAT ÉNERGÉTIQUE



VIEW

- Panoramico

CLIMATISATION

- Central

PARKING PAS. CAR

: 1

JARD RIVIÈRE ET TERRASSES N

- Terrasse ouverte
- clôtures

EXTRA

- Porte de sécurité
- Elevator

PROPERTY GALLERY





Los imágenes con derechos reservados en esta publicación son obra de los autores, no comunicables y están sujetos a la legislación de propiedad intelectual.
This is not a contract. The images are for illustrative purposes only. The images are subject to project changes.

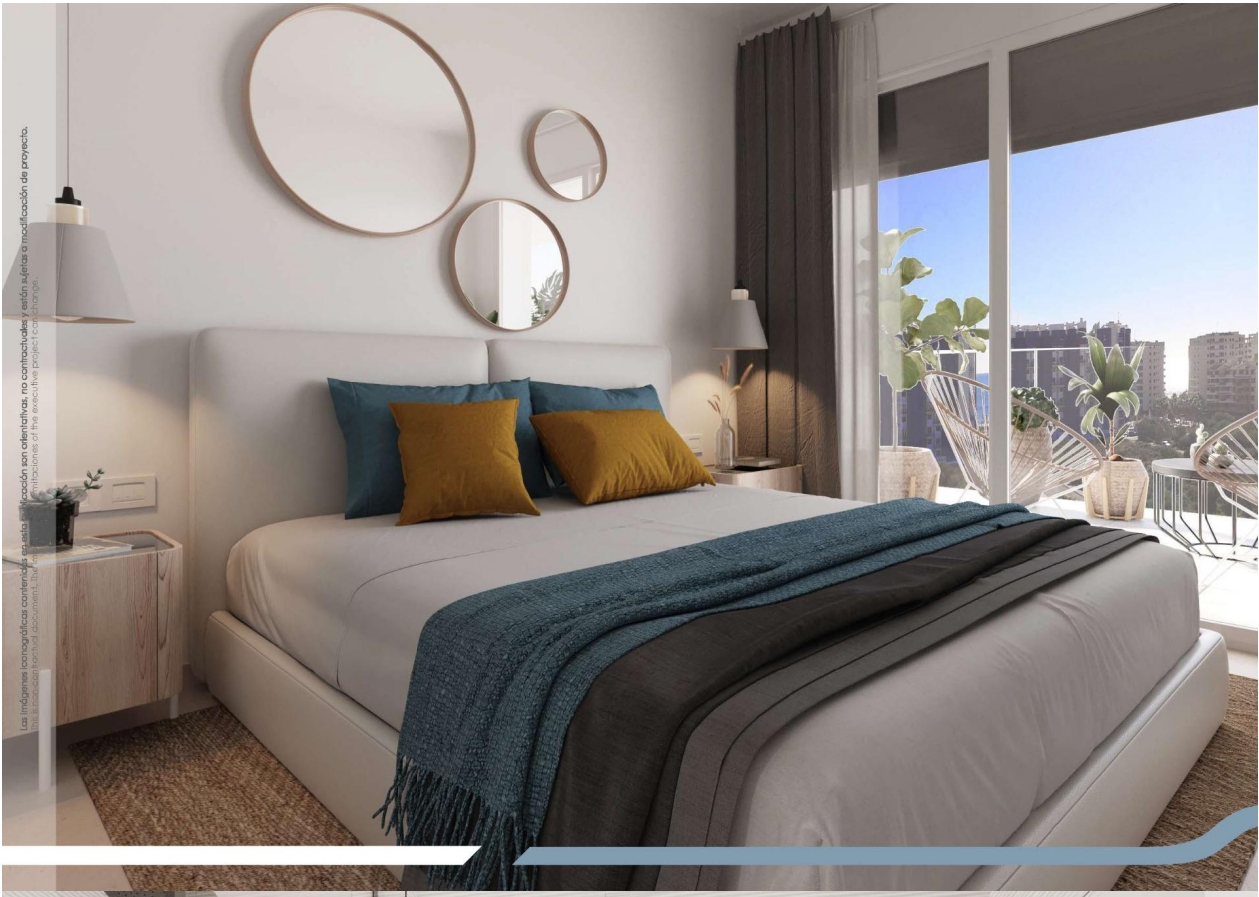




Las imágenes iconográficas contenidas en esta publicación son orientativas, no contractuales y están sujetas a modificación de proyecto.
The images are illustrative, not contractual, and are subject to change.



Las imágenes iconográficas contenidas en esta publicación son orientativas, no contractuales y están sujetas a modificación de proyecto.
The images are illustrative, not contractual, and are subject to change.



Las imágenes conceptuales contenidas en esta publicación son orientativas, no contractuales y están sujetas a modificación de proyecto.
The images are conceptual and contained in this publication are for illustrative purposes only. They are not contractual and are subject to change.



Las imágenes conceptuales contenidas en esta publicación son orientativas, no contractuales y están sujetas a modificación de proyecto.
The images are conceptual and contained in this publication are for illustrative purposes only. They are not contractual and are subject to change.



VIVIENDA TIPO 3 / HOUSE TYPE 3

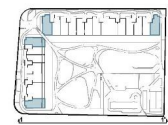
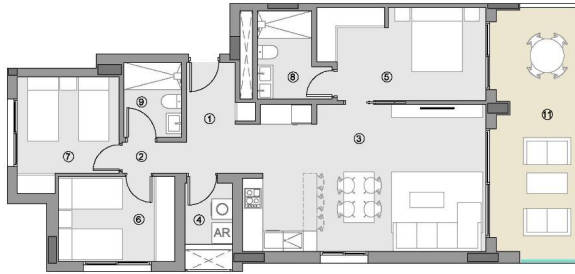
ESCALERAS / STAIRCASES
1-7-8-11 / 1-7-8-11
PLANTAS 1-8 / FLOORS 1-8

SUPERFICIES ÚTILES / USEFUL AREA

SUPERFICIES ÚTILES INTERIORES / USEFUL INTERIOR AREA	
1 ACCESO / ACCESS	5.01 m ²
2 PASO / HALLWAY	1.75 m ²
3 ESTAR-COM.-COCINA / KITCHEN-LIVING	31.23 m ²
4 TENEDERO (100%) / UTILITY ROOM	2.52 m ²
5 DORMITORIO 01 / BEDROOM 01	13.00 m ²
6 DORMITORIO 02 / BEDROOM 02	8.60 m ²
7 DORMITORIO 03 / BEDROOM 03	9.22 m ²
8 BAÑO 01 / BATHROOM 01	4.73 m ²
9 BAÑO 02 / BATHROOM 02	3.74 m ²
79.80 m²	
SUPERF. ÚTILES EXTERIORES / USEFUL EXTERIOR AREA	
10 TERRAZA 01 (100%) / TERRACE 01	19.46 m ²
19.46 m²	
SUP. ÚTIL TOTAL/TOTAL USEFUL AREA 99.26 m²	

SUPERFIC. CONSTRUIDAS / BUILT AREA

SUP. CONST. INTERIOR / INTERIOR BUILT AREA	92.02 m ²
SUP. CONST. EXT. (50%) / EXT. BUILT AREA	10.83 m ²
SUP. CONST. Z/C / BUILT AREA OF SHARED AREAS	13.51 m ²
SUP. CONST. TOTAL/TOT. BUILT AREA 116.35 m²	



0 1 2 3 4 5 m E:1/125

PLANO PROVISIONAL

"OUR EXPERIENCE IS YOUR GUARANTEE"