



REF: # 10982

TORREVIEJA



INFO

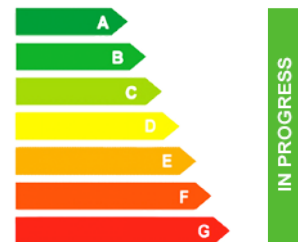
PRIX:	434.000 €
TYPE:	Appartement
CITY:	Torrevieja
CHAMBRES:	2
Ba ENFANTS:	2
Built (m2):	70
pas (m2):	40
Terrasse (m2):	18
A ENFANTS:	-
de plante:	-
MESSAGE	-



DESCRIPTION

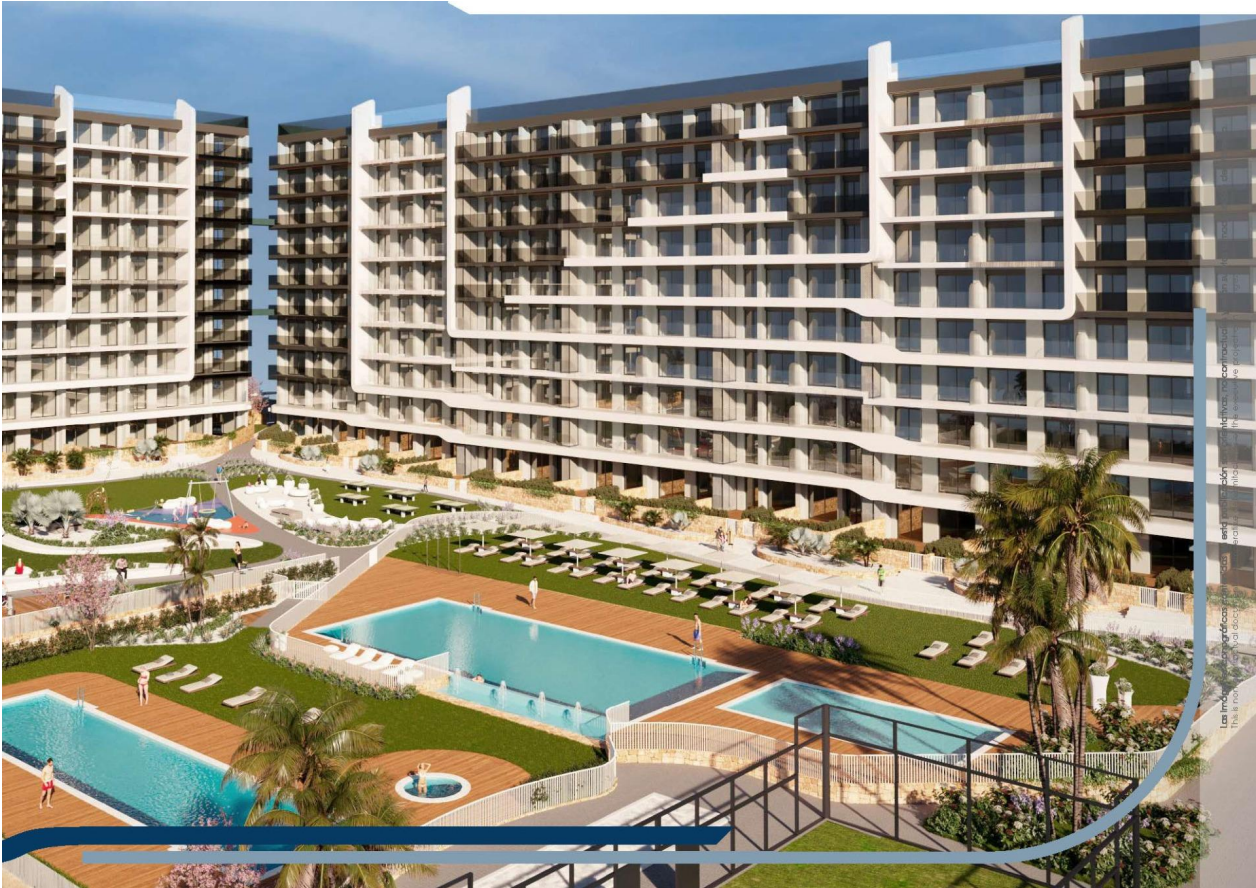
NEW BUILD RESIDENTIAL COMPLEX IN PUNTA PRIMA New Build residential complex of 220 apartments in Punta Prima, Torrevieja. Apartments with 2 and 3 bedrooms and 2 bathrooms, open plan kitchen with living room, fitted wardrobes, all of them with large terraces. Ground floor apartments with garden and penthouses with solarium. All homes are delivered with an underground parking space. The residential has garden areas with swimming pools and paddle tennis court. Children can enjoy their own children's pool, as well as a children's play area. Punta Prima, located just 5 km from Torrevieja, is characterized by good communication and health infrastructures, the proximity to Alicante airport, and the number of services open throughout the year. Just 10 km away we can find the golf courses of Villamartin, Campoamor, Las Ramblas, Las Colinas and Lo Romero, as well as the commercial centres of La Zenia and Habaneras.

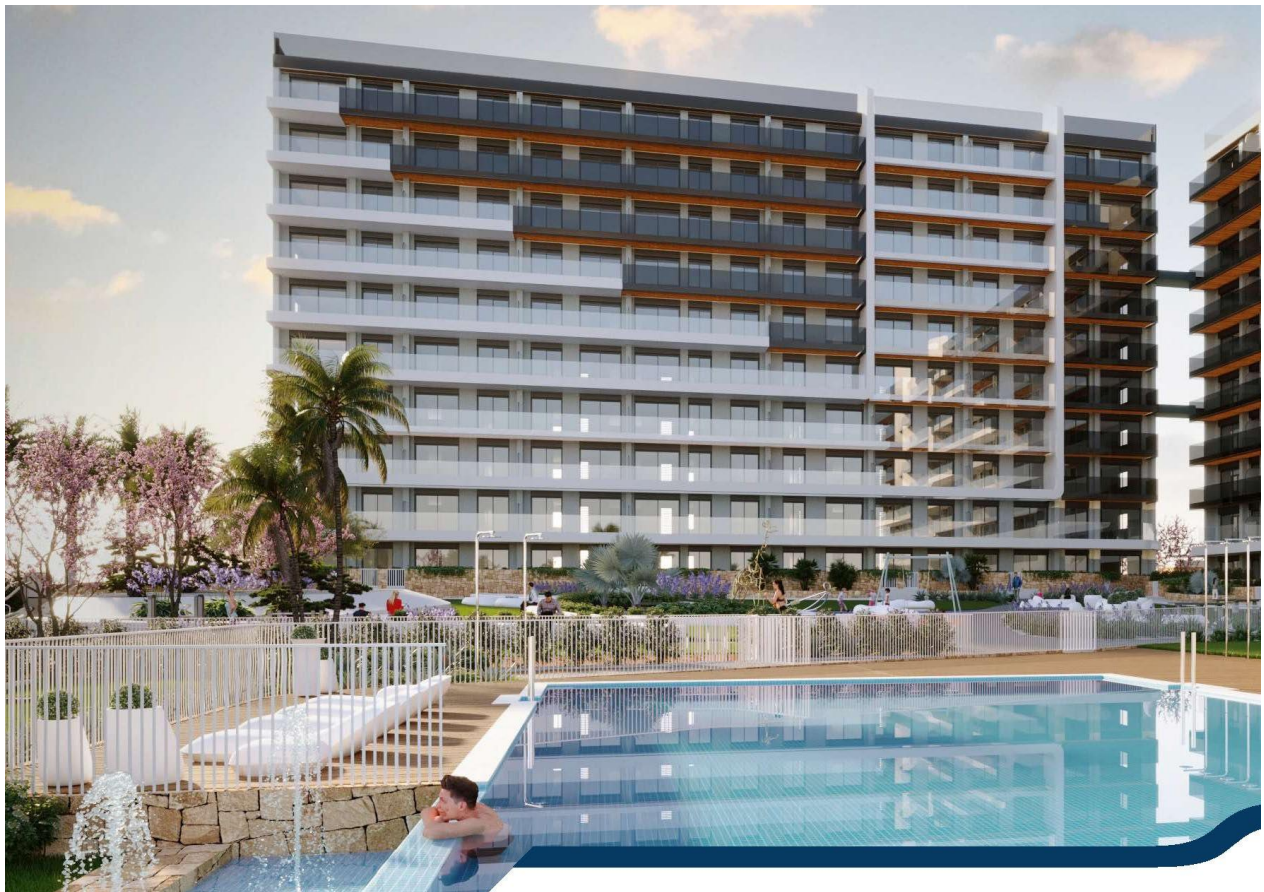
CERTIFICAT ÉNERGÉTIQUE



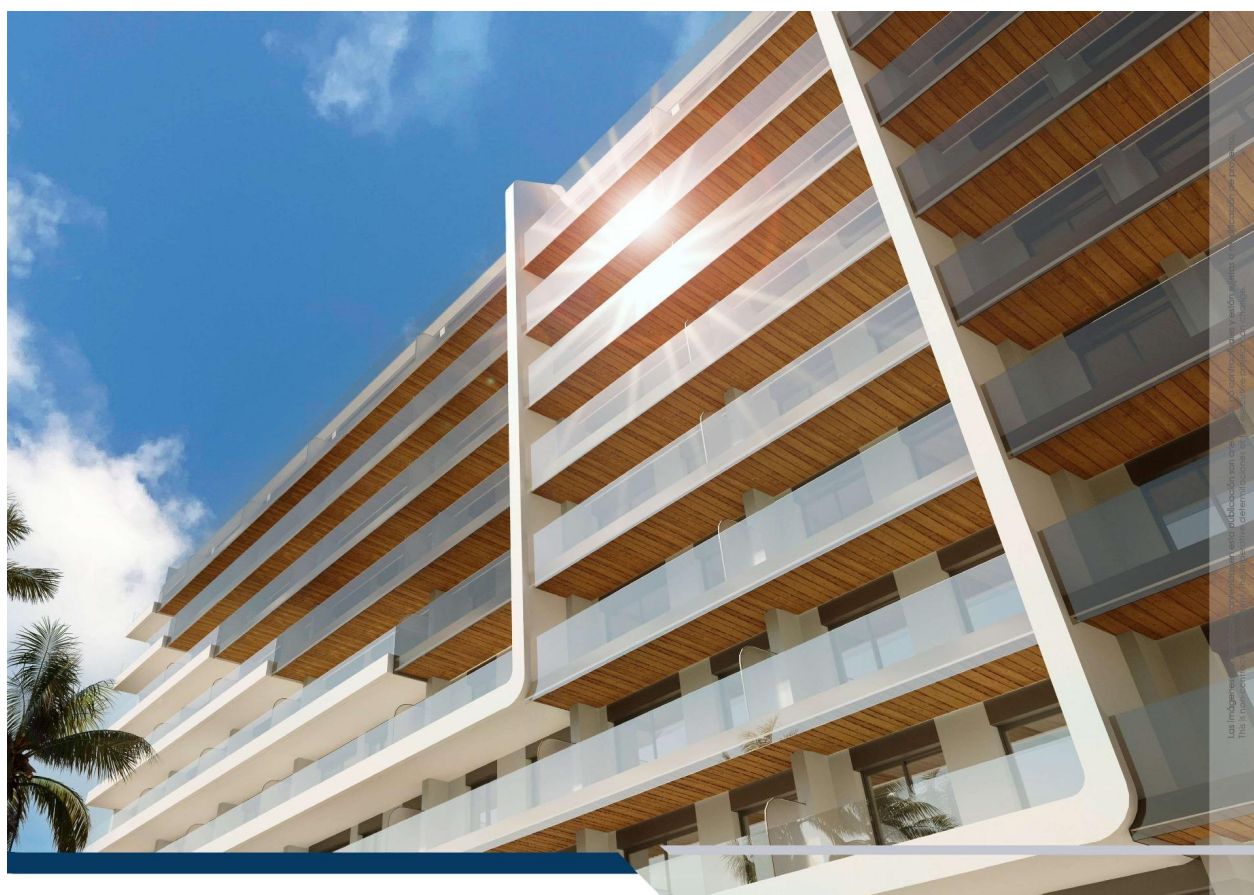
VIEW	CLIMATISATION	PARKING PAS. CAR	ZONES
<ul style="list-style-type: none">Panoramico	<ul style="list-style-type: none">Central	: 1	<ul style="list-style-type: none">Gymnasio
JARD RIVIÈRE ET TERRASSES N <ul style="list-style-type: none">Terrasse ouverteclôturesJard RIVER n privée	EXTRA <ul style="list-style-type: none">Porte de sécuritéElevator		

PROPERTY GALLERY

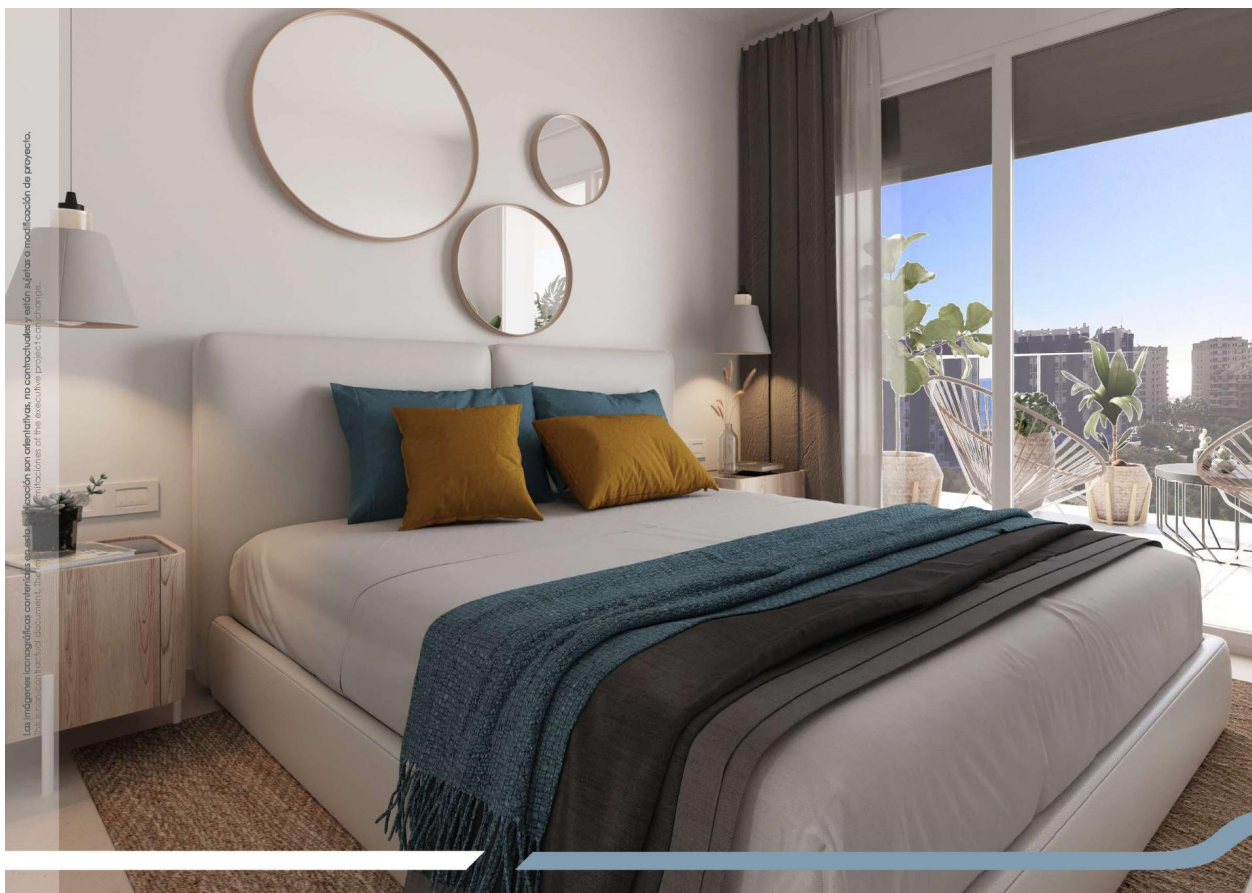




Los datos y las fotografías se muestran en esta publicación sin garantías, no constituyen ni representan una oferta de inversión. Toda información que se presente en esta publicación es meramente informativa y no debe ser utilizada como base para la toma de decisiones de inversión. Toda información que se presente en esta publicación es meramente informativa y no debe ser utilizada como base para la toma de decisiones de inversión.

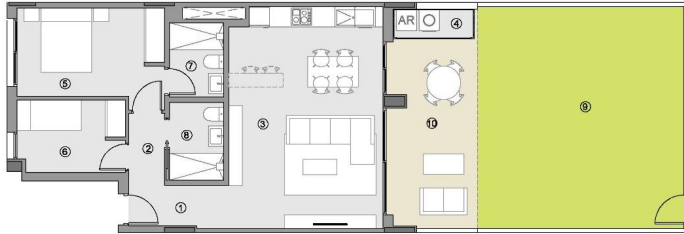








VIVIENDA TIPO **2B**
 /HOUSE TYPE **2B**
 ESCALERA 3-5 / STAIRCASE 3-5
 PLANTA BAJA / GROUND FLOOR



SUPERFICIES ÚTILES / USEFUL AREA

SUPERFICIES ÚTILES INTERIORES / USEFUL INTERIOR AREA	
1 ACCESO / ACCESS	3.61 m²
2 PASO / HALLWAY	2.23 m²
3 ESTAR-COM.-COCINA / KITCHEN-LIVING	29.44 m²
4 TENEDERO (100%) / UTILITY ROOM	2.16 m²
5 DORMITORIO 01 / BEDROOM 01	11.67 m²
6 DORMITORIO 02 / BEDROOM 02	6.72 m²
7 BAÑO 01 / BATHROOM 01	3.52 m²
8 BAÑO 02 / BATHROOM 01	3.68 m²
	63.03 m²

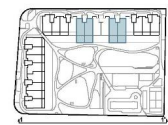
SUPERF. ÚTILES EXTERIORES / USEFUL EXTERIOR AREA

9 JARDIN (100%) / GARDEN	39.95 m²
10 TERRAZA 01 (100%) / TERRACE 01	14.72 m²
	54.67 m²

SUP. ÚTIL TOTAL/TOTAL USEFUL AREA 117.70 m²

SUPERFIC. CONSTRUIDAS /BUILT AREA

SUP. CONST. INTERIOR /INTERIOR BUILT AREA	70.11 m²
SUP. CONST. EXT. (50%) / EXT. BUILT AREA	8.41 m²
SUP. CONST. Z/C /BUILT AREA OF SHARED AREAS	10.31 m²
SUP. CONST. TOTAL/TOT. BUILT AREA	88.83 m²



0 1 2 3 4 5 m E:1/125

"OUR EXPERIENCE IS YOUR GUARANTEE"