



REF: # 10967

ALFAZ DEL PI



INFO

PRIX: 336.500 €

TYPE: Villa

CITY: Alfaz del Pi

CHAMBRES: 2

Ba ENFANTS: 2

Built (m2): 125

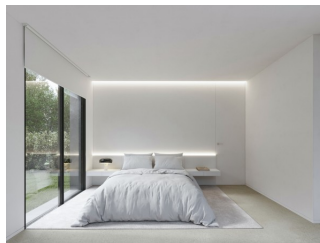
pas (m2): 500

Terrasse (m2): -

A ENFANTS: -

de plante: -

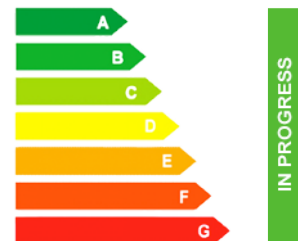
MESSAGE -



DESCRIPTION

New development of independent villas for sale in Alfaz. The houses can be purchased in three sizes with the same aesthetics, quality and functionality, according to the needs of the future owner, there is the possibility of choosing the constructed surfaces of housing from 85m² to 115m², with two or three bedrooms and two versions of day space. In addition, numerous options of finishes, types of air conditioning, selfconsumption with photovoltaic panels or home control with home automation are proposed. Therefore, a product is configured already designed, adaptable to your needs and with an established price. The houses will be distributed on one floor, which will consist of a bright and spacious living room with open kitchen fully furnished and equipped, 2 or 3 bedrooms and 2 bathrooms. Outside, we can enjoy garden areas and a wonderful pool.

CERTIFICAT ÉNERGÉTIQUE













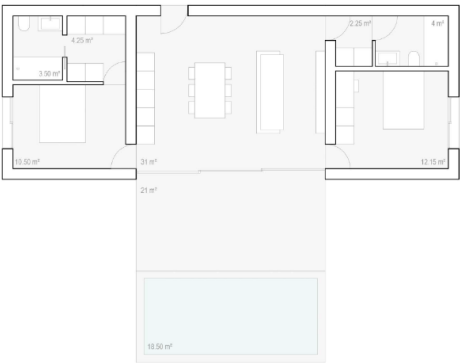
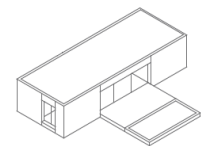




H01

Vivienda con espacios optimizados para lograr la máxima relación entre confort y costes.

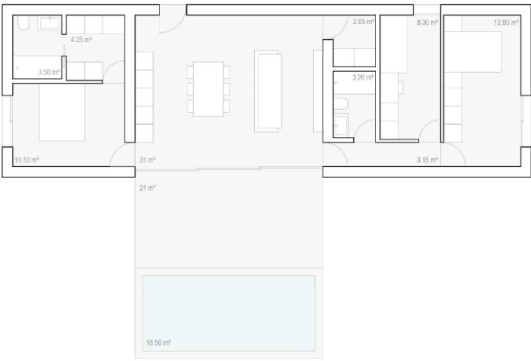
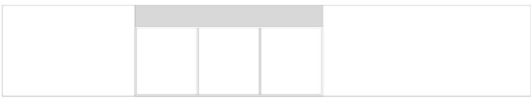
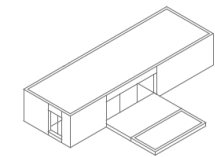
Superficie vivienda	85.50 m2
Superficie terraza	21 m2
Piscina	18.50 m2
Superficie construida total	125 m2
Dormitorios	2
Baños	2
Dimensiones	15 x 5.70 m



H02

Vivienda que surge como la evolución del tipo H01 de 3 dormitorios.

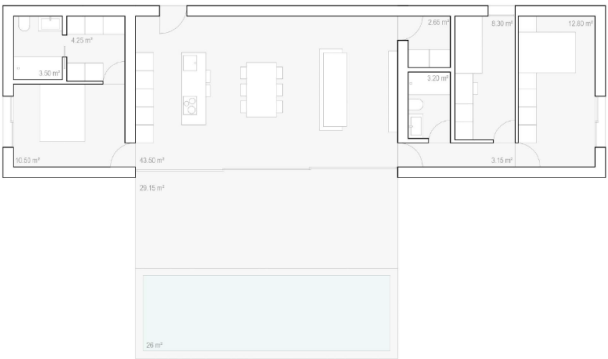
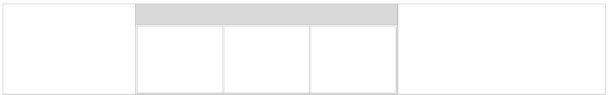
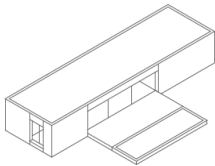
Superficie vivienda	100 m2
Superficie terraza	21 m2
Superficie aparcamiento y acceso	18.50 m2
Superficie construida total	139.50 m2
Dormitorios	3
Baños	2
Dimensiones	17.50 x 5.70 m



H03

Vivienda que surge como variante del tipo H02 con un espacio de día más amplio y con una isla en cocina. La terraza y la piscina también aumentan su superficie.

Superficie vivienda	114 m2
Superficie terraza	29.15 m2
Superficie aparcamiento y acceso	26 m2
Superficie construida total	169.15 m2
Dormitorios	3
Baños	2
Dimensiones	20 x 5.70 m



"OUR EXPERIENCE IS YOUR GUARANTEE"