



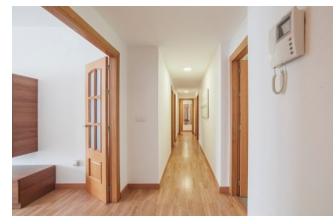
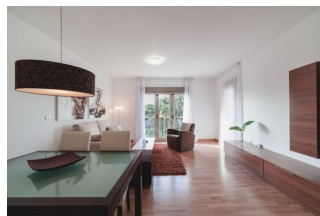
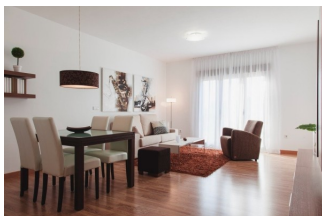
REF: # 10741

COSTA MURCIA



#### INFO

PRIX:	194.000 €
TYPE:	Appartement
CITY:	Costa Murcia
CHAMBRES:	4
Ba ENFANTS:	2
Built ( m2 ):	192
pas ( m2 ):	-
Terrasse ( m2 ):	-
A ENFANTS:	-
de plante:	-
MESSAGE	-



#### DESCRIPTION

FLAT IN EXCLUSIVE RESIDENTIAL COASTAL TOWN Exclusive residential in San Pedro del Pinatar, which is magnificently located just 10 minutes from the beach, the Town Hall and on the road that leads to the famous Lo Pagán curve. Apartment available with an area of 150.25 m2 built with 4 bedrooms, 2 bathrooms, an independent kitchen of 10m2, a living-dining room of 25.72m2, a terrace of 10 m2 and a patio of 9m2. Included in the price: Automatic video door entry kit · Air conditioner · Appliances: extractor hood, oven, refrigerator, ceramic hob Optional parking spaces in the basement. San Pedro del Pinatar is a municipality on the Murcian coast that is located on the Mar Menor and is connected to the entire country through the AP-7. and 45 minutes from the main European capitals by Alicante airport. San Pedro del Pinatar has everything to live comfortably: the calm of the port and the sea, the healthy embrace of La Laguna, the proximity to all services and the joy of the Lo Pagán curve.

#### CERTIFICAT ÉNERGÉTIQUE



**VIEW**

- Panoramico

**JARD RIVIÈRE ET  
TERRASSES N**

- Terrasse ouverte

**CHAUFFAGE**

- central au gaz

**EXTRA**

- Porte de sécurité





































***"OUR EXPERIENCE IS YOUR GUARANTEE"***