



REF: # 10232

CALPE/MORAIRA



INFO

PRIX: 2.690.000 €

TYPE: Villa

CITY: Calpe/Moraira

CHAMBRES: 5

Ba ENFANTS: 6

Built (m2): 692

pas (m2): 1.532

Terrasse (m2): -

A ENFANTS: -

de plante: -

MESSAGE -



DESCRIPTION

NEW BUILD VILLA IN MORAIRA Luxury New Build villa for sale in Benimeit area in Moraira. This high quality villa has 4 floors which are connected by an elevator and an internal staircase. The main floor has a spacious open-plan living-dining room-kitchen. The kitchen is fully equipped and has an island for cooking. Sliding doors at ceiling height give direct access to various terraces. Furthermore there are 3 double bedrooms, all with their own bathroom and a guest toilet. One level higher are 2 more double bedrooms. Each with an en-suite bathroom. The property has 2 basements. Basement number one houses the gym, an additional bathroom and the laundry room. In basement number 2 there is a garage for 2 cars and storage rooms. Air conditioning throughout the house (conduct) and central heating. Automatic entrance door with independent pedestrian entrance and intercom. On the same level as the main house is the pool. Moraira is a small town with with good restaurants, bars and plenty of supermarkets around. There is a very pleasant beach right next to town that is great for families. The seafront offers tremendous views of Penon Ifach across the bay in Calpe. The coast road getting there is well worth doing with some

spectacular views. Moraira situated about 1 hour 15 minutes North up the A7 from Alicante airport its fairly easy to get to. It's about the same distance or a little less South from Valencia airport.



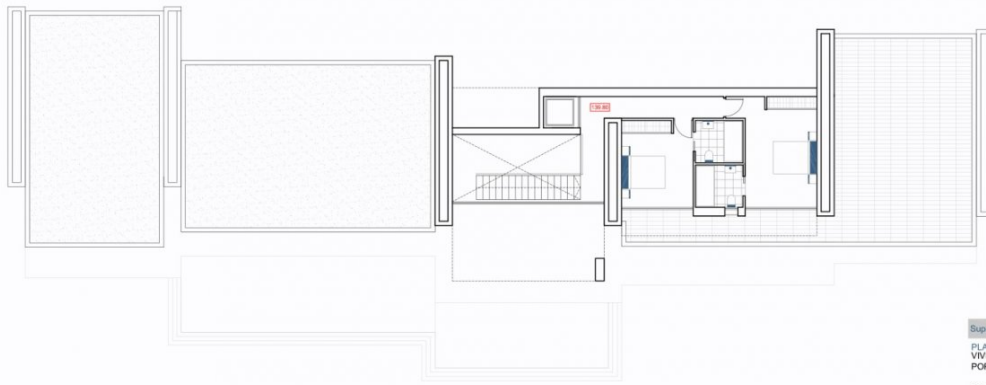
VIEW	CLIMATISATION	PARKING PAS. CAR	ZONES
<ul style="list-style-type: none">Panoramico	<ul style="list-style-type: none">Central	Garage no. Car : 1	<ul style="list-style-type: none">Gymnasio
JARD RIVIÈRE ET TERRASSES N	CHAUFFAGE	EXTRA	
<ul style="list-style-type: none">Terrasse ouverteJard RIVER n privée	<ul style="list-style-type: none">central au gazRadio	<ul style="list-style-type: none">Porte de sécuritéstockage	











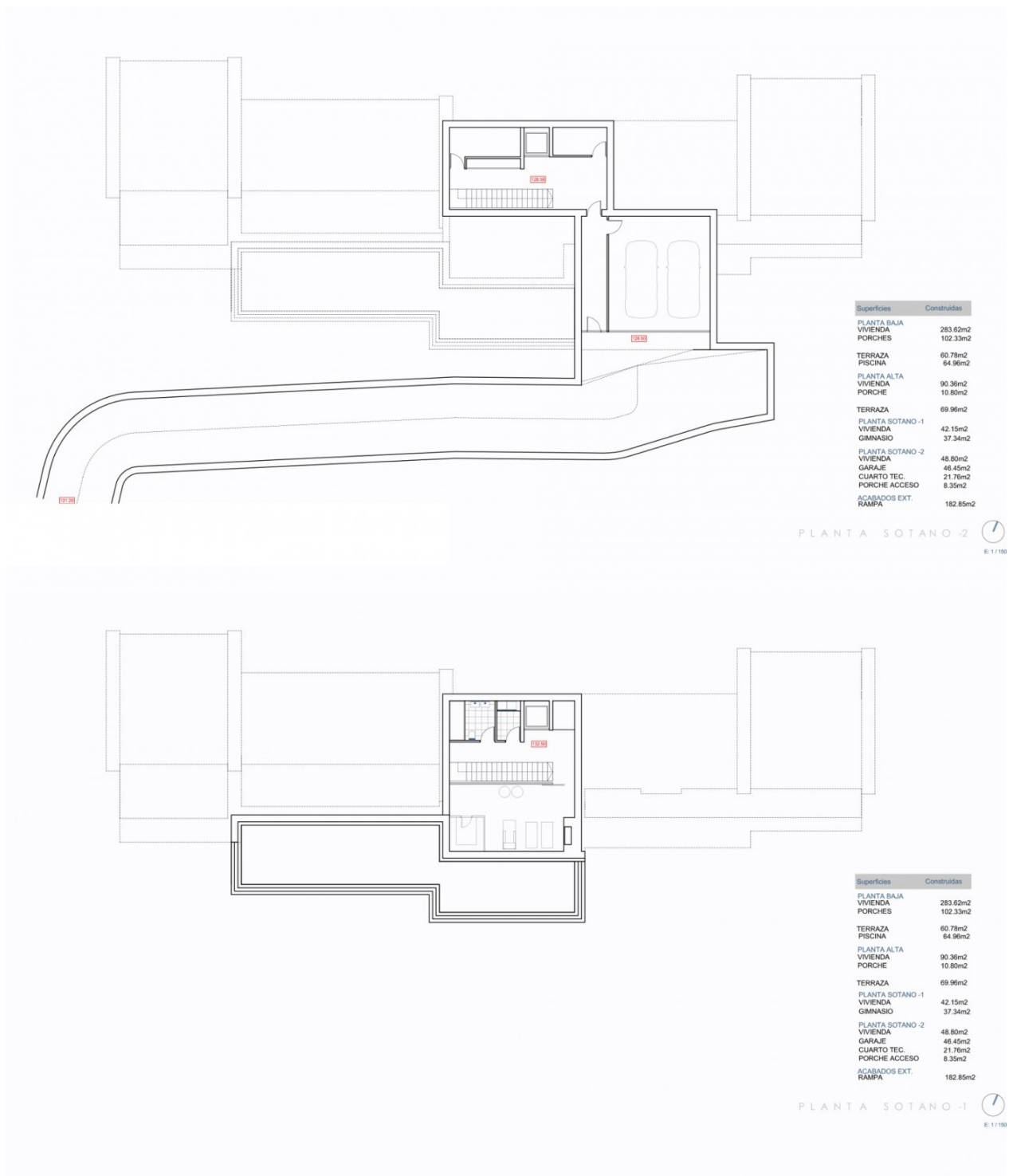
Superficies	Construidas
PLANTA BAJA	
VIVIENDA	283.62m2
PORCHES	102.33m2
TERRAZA	60.78m2
PISCINA	64.96m2
PLANTA ALTA	
VIVIENDA	90.36m2
PORCHE	10.80m2
TERRAZA	69.96m2
PLANTA SOTANO -1	
VIVIENDA	42.15m2
GINNASIO	37.34m2
PLANTA SOTANO -2	
VIVIENDA	48.80m2
GARAJE	46.45m2
CUARTO TEC.	21.76m2
PORCHE ACCESO	8.35m2
ACABADOS EXT.	
RAMPA	182.85m2

PLANTA ALTA (



Superficies	Construidas
PLANTA BAJA	
VIVIENDA	283.62m2
PORCHES	102.33m2
TERRAZA	60.78m2
PISCINA	64.96m2
PLANTA ALTA	
VIVIENDA	90.36m2
PORCHE	10.80m2
TERRAZA	69.96m2
PLANTA SOTANO -1	
VIVIENDA	42.15m2
GINNASIO	37.34m2
PLANTA SOTANO -2	
VIVIENDA	48.80m2
GARAJE	46.45m2
CUARTO TEC.	21.76m2
PORCHE ACCESO	8.35m2
ACABADOS EXT.	
RAMPA	182.85m2

PLANTA BAJA (



"OUR EXPERIENCE IS YOUR GUARANTEE"