



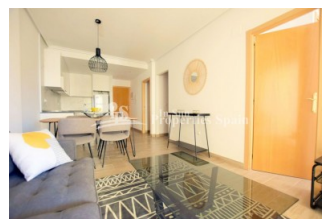
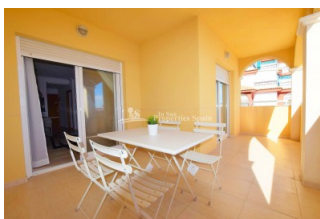
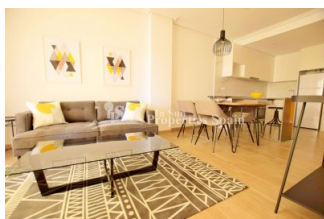
REF: # 5993

TORREVIEJA (LA MATA)



#### INFO

PRIX:	107.255 €
TYPE:	Appartement
CITY:	Torrevieja (La mata)
CHAMBRES:	2
Ba ENFANTS:	2
Built ( m2 ):	82
pas ( m2 ):	-
Terrasse ( m2 ):	15
A ENFANTS:	
de plante:	-
MESSAGE	-



#### DESCRIPTION

Key ready renovated APARTMENTS, less than 10 minutes walk/800m from the beach at LA MATA. They have a Mediterranean style exterior and modern design interior. These 2 bedroom, 2 bathroom Apartment, some with sea view have an open plan lounge with dining area, American kitchen with modern wall and base units, 2 double bedrooms both with fitted wardrobes and the master with en-suite shower room. Both the lounge and the master bedroom have direct access onto the terrace and stairs to the solarium in the Penthouse Apartments. The properties all have access to the communal swimming pool and gardens. Private parking is priced from €6,000. The properties are perfect for either a holiday home or holiday lets given their close proximity to the beach and nearby amenities. The village of La Mata is a developing tourist centre and one of the more popular Spanish villages on the Mediterranean coast. The climate in La Mata makes it an ideal location for year round holiday activities. It still retains that special "Spanish" feel and is in a relaxed environment. You are a little over 5minutes from Aquapolis Waterpark, just 10 minutes from the Parque de las Naciones

in Torrevieja and only 20 minutes from the largest shopping complex in the region, La Zenia Boulevard. Alicante and Murcia airports are 30 and 40 minutes by car respectively.



STYLE	VIEW	DISTANCE :	POSITION
<ul style="list-style-type: none"> <li>moderne</li> <li>Méditerranée</li> </ul>	<ul style="list-style-type: none"> <li>Ocean</li> </ul>	Beach : 500 m aéroport: 40 Km : 1 Km	Ouest du Sud-Est
MEUBLÉ	PARKING PAS. CAR	FRAIS	ZONES
<ul style="list-style-type: none"> <li>Vide</li> </ul>	: 1	Communauté : 521 € I.B.I : 132 €	<ul style="list-style-type: none"> <li>ou chambre BAINADE</li> </ul>
ÉTAGE	CUISINE	JARD RIVIÈRE ET TERRASSES N	CERTIFICAT ÉNERGÉTIQUE
<ul style="list-style-type: none"> <li>tuiles</li> <li>Stone</li> </ul>	<ul style="list-style-type: none"> <li>cuisine</li> <li>cuisine équipée</li> </ul>	<ul style="list-style-type: none"> <li>Terrasse couverte</li> <li>Terrasse ouverte</li> <li>Paysage</li> <li>Jard RIVER n privée</li> <li>Jard RIVER Communauté</li> </ul>	<ul style="list-style-type: none"> <li>Integre</li> <li>A de sécurité</li> <li>Double vitrage</li> </ul> 

"OUR EXPERIENCE IS YOUR GUARANTEE"