



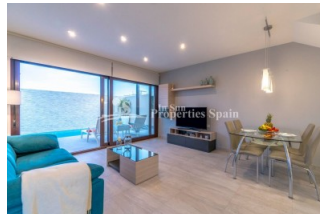
REF: # 5950

COSTA MURCIA (SAN PEDRO DEL PINATAR)



INFO

PRIX:	239.000 €
TYPE:	Villa
CITY:	Costa Murcia (San Pedro del Pinatar)
CHAMBRES:	3
Ba ENFANTS:	2
Built (m2):	105
pas (m2):	156
Terrasse (m2):	-
A ENFANTS:	
de plante:	-
MESSAGE	270.000 €




DESCRIPTION

Last available Detached Villa in the small Spanish town of SAN PEDRO DEL PINATAR. Key Ready and includes Furniture, Solarium, Fridge, Oven and Glass screen in the shower. Set between two seas; the Mediterranean Sea and the Mar Menor (Small Sea) the villa offers 3 bedrooms and 2 full bathrooms plus a private swimming pool. This model is of 105m2, has three bedrooms and a bathroom on the first floor with the second bathroom to the ground floor. It is on a 156m2 plot with private garden and solarium. In addition included is a fully equipped kitchen, Pre-Installation of AC, built in lined wardrobes, aluminium windows, security front door and artificial grass in the garden. The residents of this unique location can enjoy both the warm waters of the Mediterranean Sea (Just 2km away) and the salt Laguna of Mar Menor, the largest salty lake in Europe. Mar Menor is ideal for bathing small children with its shallow and calm waters, as well as for practicing a variety of water sports such as swimming, paddle surfing, kayaking and windsurfing.

CERTIFICAT ÉNERGÉTIQUE



STYLE	VIEW	DISTANCE :	POSITION
<ul style="list-style-type: none"> moderne contemporain 	<ul style="list-style-type: none"> Panoramico 	Beach : 2 Km aéroport: 10 Km : 1 Km	Ouest du Sud-Est
MEUBLÉ	PARKING PAS. CAR	ÉTAGE	CUISINE
<ul style="list-style-type: none"> meublé 	: 1	<ul style="list-style-type: none"> tuiles Stone 	<ul style="list-style-type: none"> cuisine cuisine équipée
JARD RIVIÈRE ET TERRASSES N	EXTRA	CERTIFICAT ÉNERGÉTIQUE	
<ul style="list-style-type: none"> Terrasse couverte Terrasse ouverte Paysage murs en pierre Jard RIVER n privée 	<ul style="list-style-type: none"> intégré Porte de sécurité Double vitrage 	 <p>The image shows a vertical energy efficiency scale with seven horizontal bars labeled A through G. The bars are colored in a gradient from green at the top to red at the bottom. A vertical green bar on the right side of the scale is labeled 'IN PROGRESS'.</p>	

"OUR EXPERIENCE IS YOUR GUARANTEE"