



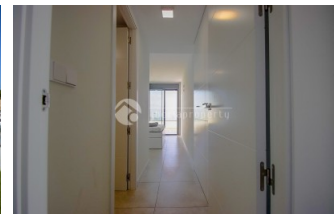
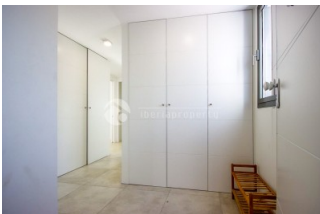
REF: # 13335

FINESTRAT (SIERRA CORTINA)



INFO

<b>PRIX:</b>	645.000 €
<b>TYPE:</b>	Appartement (Penthouse)
<b>CITY:</b>	Finestrat (Sierra Cortina)
<b>CHAMBRES:</b>	3
<b>Ba ENFANTS:</b>	2
<b>Built ( m2 ):</b>	140
<b>pas ( m2 ):</b>	-
<b>Terrasse ( m2 ):</b>	-
<b>A ENFANTS:</b>	
<b>de plante:</b>	4
<b>MESSAGE</b>	-

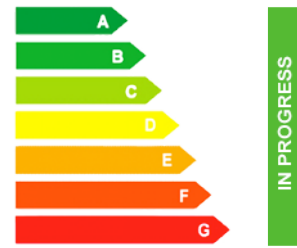


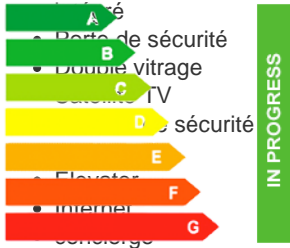
DESCRIPTION

Discover this spectacular corner penthouse in the exclusive Seascape residential complex, featuring a southeast orientation that ensures sunlight all day long and uninterrupted, open views of the Mediterranean Sea and the Benidorm skyline. This home stands out for its spaciousness, brightness and an exceptional terrace designed to make the most of Costa Blanca living. Layout Entrance hall 3 bedrooms, all with direct access to a large terrace/balcony Master bedroom with en-suite bathroom 2 full bathrooms (including the en-suite) Open-plan living/dining area, bright and airy, connected to the kitchen Fully equipped kitchen, with views, ideal for everyday living Outdoor space 105 m<sup>2</sup> main terrace, spacious and private Jacuzzi and plenty of room for a chill-out area, outdoor dining and sunbathing Included extras Private parking space Storage room Communal areas (private resort-style facilities) Within the complex you can enjoy: Outdoor swimming pool Indoor swimming pool Gym Coworking room Paddle tennis courts Children's playground Location Just a few minutes by car from Benidorm

and all amenities such as La Marina Shopping Centre, with the airport approximately 30 minutes away—ideal as a permanent residence, second home or investment. A unique property thanks to its orientation, views and outstanding terrace. Ready to enjoy.

## CERTIFICAT ÉNERGÉTIQUE



<b>STYLE</b>	<b>VIEW</b>	<b>CLIMATISATION</b>	<b>DISTANCE :</b>
<ul style="list-style-type: none"> <li>moderne</li> </ul>	<ul style="list-style-type: none"> <li>Panoramico</li> <li>Ocean</li> <li>une vue sur la montagne</li> </ul>	<ul style="list-style-type: none"> <li>Central</li> <li>manger</li> <li>Cuisine</li> <li>chambres</li> </ul>	Beach : 2 Km aéroport: 30 Km : 1 Km
<b>POSITION</b>	<b>MEUBLÉ</b>	<b>PARKING PAS. CAR</b>	<b>ÉTAGE</b>
Est sud	<ul style="list-style-type: none"> <li>meublé</li> </ul>	Garage no. Car : 1	<ul style="list-style-type: none"> <li>Stone</li> </ul>
<b>CUISINE</b>	<b>JARD RIVIÈRE ET TERRASSES N</b>	<b>CHAUFFAGE</b>	<b>CERTIFICAT ÉNERGÉTIQUE</b>
<ul style="list-style-type: none"> <li>cuisine</li> <li>cuisine équipée</li> <li>granit</li> </ul>	<ul style="list-style-type: none"> <li>Terrasse ouverte</li> <li>Feux extérieurs</li> <li>Court de tennis</li> <li>arbres fruitiers</li> <li>Palm</li> <li>Playground</li> <li>murs en pierre</li> <li>hayon</li> <li>barbecue / grill</li> <li>paddle</li> <li>Jard RIVER n privée</li> <li>Jard RIVER Communauté</li> </ul>	<ul style="list-style-type: none"> <li>chauffage électrique</li> <li>chauffage buif ENFANTS cheminée</li> </ul>	<ul style="list-style-type: none"> <li>cuve extérieure</li> <li>Porte de sécurité</li> <li>Double vitrage</li> <li>Satellite TV</li> <li>Porte de sécurité</li> <li>Elevator</li> <li>Intermer</li> <li>Sanitaire</li> </ul> 

**"OUR EXPERIENCE IS YOUR GUARANTEE"**