

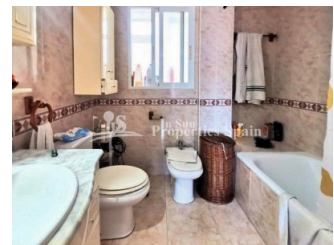


REF: # 13209



#### INFO

PRIX:	259.000 €
TYPE:	Appartement
CITY:	
CHAMBRES:	3
Ba ENFANTS:	2
Built ( m2 ):	102
pas ( m2 ):	-
Terrasse ( m2 ):	10
A ENFANTS:	-
de plante:	4
MESSAGE	-



#### DESCRIPTION

Located on the third floor with lift access, this property offers both comfort and an unbeatable location. It features three bedrooms, two full bathrooms (one en suite), an independent kitchen with utility area, and a bright and spacious living-dining room with access to a cozy terrace — perfect for enjoying the Mediterranean climate and the open views. The apartment is in good condition and surrounded by all essential services: public transport, supermarkets, shops, and a wide selection of bars and restaurants. In addition, it is just a short stroll from Altea's seafront promenade and the new beach, one of the town's most sought-after areas. The property has a built area of 102 m², distributed across three bedrooms, two bathrooms, and one terrace. No private parking included. An ideal opportunity for those who wish to live with every convenience in the very center of Altea.

#### CERTIFICAT ÉNERGÉTIQUE



STYLE	VIEW	DISTANCE :	POSITION
<ul style="list-style-type: none"> <li>Méditerranée</li> </ul>	<ul style="list-style-type: none"> <li>Panoramico</li> <li>une vue sur la montagne</li> </ul>	Beach : 200 m aéroport: 40 Km : 50 m	Nord
ÉTAGE	CUISINE	JARD RIVIÈRE ET TERRASSES N	CHAUFFAGE
<ul style="list-style-type: none"> <li>Stone</li> </ul>	<ul style="list-style-type: none"> <li>cuisine fermée</li> <li>cuisine équipée</li> </ul>	<ul style="list-style-type: none"> <li>Terrasse ouverte</li> <li>Feux extérieurs</li> <li>clôtures</li> </ul>	<ul style="list-style-type: none"> <li>central au gaz</li> </ul>
EXTRA	CERTIFICAT ÉNERGÉTIQUE		
<ul style="list-style-type: none"> <li>Porte de sécurité</li> <li>Laundry</li> <li>Internet</li> </ul>	 <p>The image shows a vertical energy efficiency scale with seven horizontal bars labeled A through G. Bar A is dark green, B is green, C is light green, D is yellow, E is orange, F is red-orange, and G is red. To the right of these bars is a vertical green bar with the text 'IN PROGRESS' written vertically inside it.</p>		

**"OUR EXPERIENCE IS YOUR GUARANTEE"**