



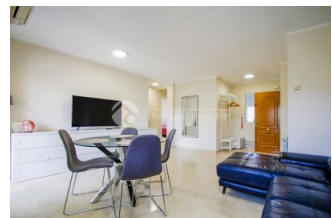
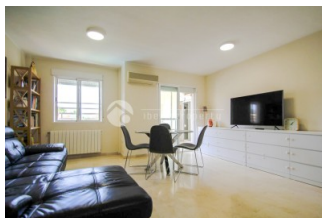
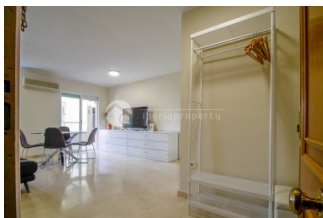
REF: # 13132

ALBIR (ALBIR)



INFO

:	Check
TYPE:	
CITY:	Albir (Albir)
CHAMBRES:	2
Ba ENFANTS:	2
Built (m2):	95
pas (m2):	-
Terrasse (m2):	-
A ENFANTS:	2004
de plante:	4
lits	2



DESCRIPTION

Fourth floor penthouse for long term rental in the heart of Albir – just a 5 minute walk from the beach! Beautiful penthouse on the fourth floor of a building with a communal pool, located in one of the most convenient areas of Albir. Next to the school and just a few minutes on foot from supermarkets, restaurants, schools, and all kinds of amenities. The beach is only a 5 minute walk away! Available exclusively for long term rental. The home stands out for its brightness and functional layout. It features a spacious and sunny living dining room opening onto a balcony overlooking the community pool, perfect for enjoying the Mediterranean climate year round thanks to its excellent orientation. There are two bedrooms with built in wardrobes, the master being a generous suite with en suite bathroom and direct access to the balcony. The second bedroom is versatile—ideal as a guest room or home office—and is served by a second full bathroom. The kitchen is large, independent, and fully equipped, ready to move in. The building also offers a communal pool, well maintained common areas, and an underground parking space included in the price. Perfect for those

seeking peace and quiet without giving up the convenience of having everything at hand. • Prime location ?? Bright with great sun orientation • Communal pool • Garage included •? Beach a 5?minute walk.



STYLE	VIEW	CLIMATISATION	DISTANCE :
<ul style="list-style-type: none"> moderne contemporain 	<ul style="list-style-type: none"> une vue sur la montagne 	<ul style="list-style-type: none"> manger 	Beach : 500 m aéroport: 30 Km : 200 m
POSITION	MEUBLÉ	PARKING PAS. CAR	ÉTAGE
Sur	<ul style="list-style-type: none"> meublé 	Garage no. Car : 1	<ul style="list-style-type: none"> marbre
CUISINE	JARD RIVIÈRE ET TERRASSES N	CHAUFFAGE	CERTIFICAT ÉNERGÉTIQUE
<ul style="list-style-type: none"> cuisine fermée cuisine équipée granit 	<ul style="list-style-type: none"> Terrasse ouverte Playground murs en pierre Jard RIVER Communauté 	<ul style="list-style-type: none"> central au gaz Radio 	 <p>The image shows a vertical energy efficiency scale with seven horizontal bars labeled A through G. The bars are colored in a gradient from dark green at the top to red at the bottom. To the right of the scale is a vertical green bar with the text 'IN PROGRESS' written vertically.</p>

"OUR EXPERIENCE IS YOUR GUARANTEE"