



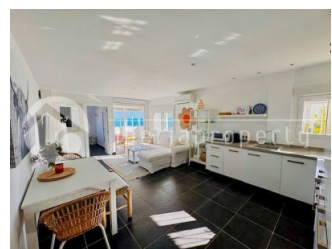
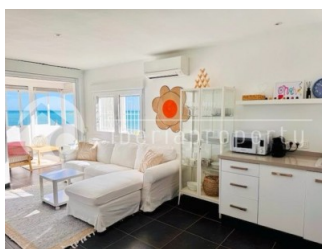
REF: # 13117

ALTEA (CAP NEGRET)



INFO

PRIX:	365.000 €
TYPE:	Appartement
CITY:	Altea (Cap Negret)
CHAMBRES:	2
Ba ENFANTS:	1
Built (m2):	60
pas (m2):	-
Terrasse (m2):	-
A ENFANTS:	1986
de plante:	-
MESSAGE	-



DESCRIPTION

This charming apartment is located on the seafront, just a 5-minute walk from the town center of Altea and all essential services. Situated on a bright corner of the ground floor, it enjoys abundant natural light throughout the day. The property features a spacious living-dining area with direct access to a glazed terrace offering open sea views—perfect for enjoying the sea breeze year-round. The recently renovated open-plan kitchen integrates seamlessly with the main living space. There are two double bedrooms, one of which boasts beautiful sea views, and a full bathroom. Air conditioning is installed in both the living room and bedrooms for added comfort. An ample storage room is included, ideal for storing bicycles, sports equipment, or even a quad bike. The well-

maintained community offers a lovely garden with outdoor dining space and an impressive communal rooftop terrace with a chill-out area, providing panoramic 360° views of the Mediterranean Sea and the nearby mountains. This well-distributed, spacious, and bright property is perfect as a primary residence, holiday home, or a high-demand investment opportunity. Apartment Layout: Bright living-dining room with direct access to the glazed terrace Renovated open-plan kitchen Glazed terrace with sea views 2 double bedrooms (master with sea views) 1 full bathroom Air conditioning in living room and bedrooms Spacious storage room included Communal garden/terrace with outdoor dining area Communal rooftop terrace with seating area and 360° views."

CERTIFICAT ÉNERGÉTIQUE

energy house

Image type unknown

<https://iberiaproperty.fr/assets/images/viass/energy/C>

STYLE	CLIMATISATION	DISTANCE :	POSITION
<ul style="list-style-type: none">contemporainMéditerranée	<ul style="list-style-type: none">Central	Beach : 50 m aéroport: 40 Km : 1 Km	Est sud
MEUBLÉ	PARKING PAS. CAR	ÉTAGE	CUISINE
<ul style="list-style-type: none">meublé	Garage no. Car : 1	<ul style="list-style-type: none">Stone	<ul style="list-style-type: none">cuisinecuisine équipée
JARD RIVIÈRE ET TERRASSES N	CHAUFFAGE	EXTRA	CERTIFICAT ÉNERGÉTIQUE
<ul style="list-style-type: none">Terrasse couverteFeux extérieursPalmPlaygroundmurs en pierrecuisine d'étéJard RIVER Communauté	<ul style="list-style-type: none">chauffage électrique	<ul style="list-style-type: none">Porte de sécuritéSatellite TVInternet	energy house Image type unknown https://iberiaproerty.fr/assets/images/viass/

"OUR EXPERIENCE IS YOUR GUARANTEE"