



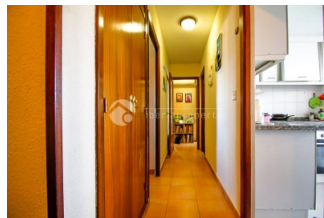
REF: # 12971

BENIDORM (PLAYA LEVANTE)



#### INFO

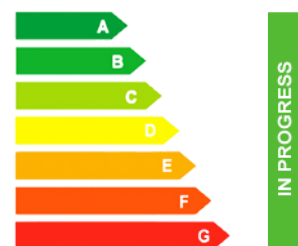
|                  |                          |
|------------------|--------------------------|
| PRIX:            | 275.000 €                |
| TYPE:            | Appartement              |
| CITY:            | Benidorm (Playa Levante) |
| CHAMBRES:        | 4                        |
| Ba ENFANTS:      | 2                        |
| Built ( m2 ):    | 111                      |
| pas ( m2 ):      | -                        |
| Terrasse ( m2 ): | -                        |
| A ENFANTS:       | 1987                     |
| de plante:       | 6                        |
| MESSAGE          | -                        |



#### DESCRIPTION

We present this cozy and sunny apartment located in the flat area of Rincón de Loix, just 400 meters from the famous Levante Beach. The property features 3 spacious bedrooms (originally 4), 2 full bathrooms, storage room, and included parking space. It is equipped with air conditioning and appliances, ready to move in. Southeast-facing, the apartment receives excellent natural light throughout the day, making it a warm and pleasant space. It also offers communal areas with a swimming pool and garden, ideal for enjoying the Mediterranean climate. Located in a very convenient and well-connected area, close to supermarkets, schools, health center, IMED Levante Hospital, and all kinds of services. If you are interested, contact us."

#### CERTIFICAT ÉNERGÉTIQUE



| STYLE   | VIEW   | CLIMATISATION  | DISTANCE :  |
|---|--|--|---|
| <ul style="list-style-type: none"> <li>Méditerranée</li> </ul>  | <ul style="list-style-type: none"> <li>Panoramico</li> <li>Ocean</li> </ul>  | <ul style="list-style-type: none"> <li>chambres</li> </ul>       | Beach : 200 m<br>aéroport: 30 Km<br>: 50 m  |
| MEUBLÉ  | PARKING PAS. CAR   | FRAIS  | ÉTAGE   |
| <ul style="list-style-type: none"> <li>meublé</li> </ul>  | Garage no. Car : 1   | Communauté : 150 €   | <ul style="list-style-type: none"> <li>bois</li> <li>Stone</li> </ul>   |
| CUISINE   | JARD RIVIÈRE ET TERRASSES N  | CHAUFFAGE  | CERTIFICAT ÉNERGÉTIQUE  |
| <ul style="list-style-type: none"> <li>cuisine fermée</li> <li>cuisine équipée</li> <li>granit</li> </ul> | <ul style="list-style-type: none"> <li>Terrasse couverte</li> <li>Playground</li> <li>murs en pierre</li> <li>Jard RIVER Communauté</li> </ul> | <ul style="list-style-type: none"> <li>central au gaz</li> </ul> | <ul style="list-style-type: none"> <li>Integre</li> <li>de sécurité</li> <li>Satellite TV</li> <li>Laundry</li> <li>Elevator</li> </ul>  |

"OUR EXPERIENCE IS YOUR GUARANTEE"