



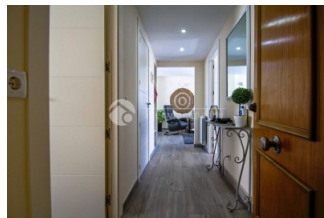
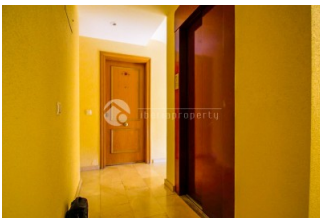
REF: # 12823

ALBIR (ALBIR CENTRO)



INFO

PRIX:	385.000 €
TYPE:	Appartement
CITY:	Albir (Albir centro)
CHAMBRES:	2
Ba ENFANTS:	2
Built (m2):	91
pas (m2):	-
Terrasse (m2):	-
A ENFANTS:	1998
de plante:	-
MESSAGE	-

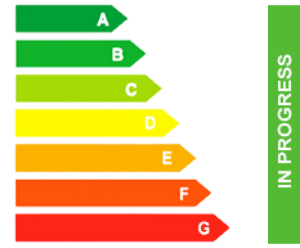


DESCRIPTION

This apartment in perfect condition is ready to move in. Located in one of the best areas of Albir, this home is just 2 minutes on foot from the beach, allowing you to enjoy the sea and Mediterranean breeze at all times. Additionally, its location offers the convenience of having all kinds of shops, restaurants, and services nearby, making your day-to-day life practical and enjoyable. The best part is its south-facing orientation, ensuring that your home will receive sunlight all day long, creating a warm and bright atmosphere. Layout: 2 spacious bedrooms: both with fitted wardrobes, providing maximum comfort and privacy. 2 modern bathrooms: one en-suite in the master bedroom, both with high-quality finishes and functional design. Open-plan kitchen with an independent island: fully equipped, open to the living room, with an island that provides additional space for cooking, storage, and enjoying family or social gatherings. Living-dining room: spacious, with plenty of natural light, perfect for creating a cozy and relaxing environment. Glazed balcony: facing south, where you can enjoy the views and sun all day without sacrificing the comfort and protection offered by the glazing. The

property is in perfect condition and requires no renovation. Everything is ready for you to move in and enjoy a comfortable, modern, and functional home.

CERTIFICAT ÉNERGÉTIQUE



STYLE	VIEW	CLIMATISATION	DISTANCE :
<ul style="list-style-type: none"> moderne 	<ul style="list-style-type: none"> Panoramico Ocean une vue sur la montagne 	<ul style="list-style-type: none"> Central 	Beach : 100 m aéroport: 40 Km : 50 m
POSITION	MEUBLÉ	PARKING PAS. CAR	FRAIS
Sur	<ul style="list-style-type: none"> meublé 	Garage no. Car : 1	Communauté : 85 € I.B.I : 430 €
ÉTAGE	CUISINE	JARD RIVIÈRE ET TERRASSES N	CERTIFICAT ÉNERGÉTIQUE
<ul style="list-style-type: none"> flottant plancher bois 	<ul style="list-style-type: none"> cuisine cuisine équipée 	<ul style="list-style-type: none"> Terrasse couverte 	 <p>The image shows a vertical energy performance scale with seven levels labeled A through G. Level A is dark green, B is green, C is light green, D is yellow, E is orange, F is red-orange, and G is red. A vertical green bar on the right side of the scale is labeled 'IN PROGRESS'.</p>

"OUR EXPERIENCE IS YOUR GUARANTEE"